



AUSSIE BUCKETS

PERFORMANCE
 **RANGE**

MBI
MULTI
SYSTEM

CONTENTS

.03	INTRODUCTION
.04	SAY NO TO MARKUPS
.05	OUR STORY
.06	WHY CHOOSE AUSSIE BUCKETS?
.07	MANUFACTURE & DELIVERY
.08	OVERVIEW
10	MBI MULTI SYSTEM
.14	GALLERY
.16	PARTNERING WITH MBI
.17	MBI COMPANY BACKGROUND
.18	CONTACT US



Aussie Buckets has launched its new Performance Range of excavator attachments, featuring cutting-edge technology and innovative designs that create world-class machine efficiency and precise material handling for various applications. With a focus on durability and longevity, the performance range is built to last and perform at the highest level.

Say **No** To Markups.

As a fundamental part of society, operators in the excavation industry deserve to be looked out for.

Aussie Buckets specializes in offering an extensive selection of robust and durable excavator grabs and buckets designed for heavy-duty applications.

Our product range includes 100% customized attachments that are compatible with major OEM brands such as Cat, Komatsu, JCB, and Kubota. With over 102 pickup locations across the nation, a 12-month warranty, and lifetime after-sales support, we are committed to providing the highest level of customer satisfaction.

Aussie Buckets boasts a team of highly skilled and experienced engineers who are proficient in designing and fabricating attachments that are custom-built to meet the specific requirements of your machine.

As a leading supplier of attachments in Australia, we pride ourselves on using top-quality materials and cutting-edge technology to deliver superior products that are capable of withstanding the challenging conditions of Australian landscapes.



Our Story.

A mission to provide hard-working Australian operators with high-quality products at a fair price.

Aussie Buckets, established in 2018, is a subsidiary of the Kuzmich Watts & Tomich Group Pty Ltd Company. Our inception was driven by the need to offer Australian operators reliable and high-quality products at fair and competitive prices.

Our attachments are crafted to the highest quality standards and constructed using heavy-duty materials, thanks to our global manufacturing capabilities. With rigorous design and testing in the most demanding environments, you can trust that our attachments are built to endure the challenging landscapes of Australia.

Not only do we prioritize durability and performance, but we also offer cost-effective solutions that can save you thousands in upfront costs. Join the movement and say NO to unjustified markups by choosing Aussie Buckets for your attachment needs. Experience the difference in quality, reliability, and affordability with us.

Why Choose Aussie Buckets?

Aussie Buckets is a reputable provider of premium heavy-duty excavator grabs and buckets. Our extensive range of attachments are fully customizable to suit all major OEM brands, including Cat, Komatsu, JCB, and Kubota, ensuring a perfect fit for your specific equipment.

With a vast network of 102+ pickup locations across the nation, we are committed to making our products easily accessible to our valued customers. In addition, our attachments are backed by a comprehensive 12-month warranty, providing peace of mind and assurance of our commitment to quality.

At Aussie Buckets, we go beyond just selling attachments - we provide lifetime after-sales support to our customers. Our team of experts is readily available to assist with any queries, concerns, or technical assistance, ensuring a seamless experience throughout the lifetime of your attachment.

We take pride in offering affordable excavator attachments without compromising on quality or performance. We believe that hard-working Aussies deserve the best, and it's our mission to deliver exceptional products that meet their needs and exceed their expectations.

Choose Aussie Buckets for superior excavator attachments that are tailored to your requirements, backed by reliable warranty and lifetime after-sales support. Experience the difference in quality and service with our dedicated team.

CORE VALUES

We pride ourselves in delivering exceptional quality, unmatched customer service, and relentless commitment to innovation and excellence.

► 12-MONTH WARRANTY

Our 12-month warranty, provided with every MBI Scrap Shear 3, offers unparalleled peace of mind, assuring our customers of the durability, reliability, and quality of our products for an extended period of time.

► LIFETIME SUPPORT

Our lifetime after-sales support guarantees ongoing assistance and technical guidance to our customers, ensuring a seamless experience and maximizing the lifespan of our excavator attachments.

► LARGEST RANGE IN AUSTRALIA

As the leading provider in Australia, we boast the largest and most comprehensive range of excavator attachments, offering a wide selection of options to cater to various applications and equipment brands.

► 100% PURPOSE BUILT

Our attachments are exclusively designed and fabricated 100% purpose-built to meet the unique requirements of our customers, ensuring optimal performance and satisfaction with our products.



Aidan Kuzmich
MANAGING DIRECTOR

A. Kuzmich

Manufacture & Delivery.

Our extensive product range is meticulously engineered to excel in the most challenging environments, and our reputation as a trusted provider of durable and dependable materials handling equipment is widely recognized in the industry.

MANUFACTURE

In the first four weeks, you'll receive updates at the following milestones; 50% production progress and 100% production completed alongside product photos.

IMPORT

Following fabrication completion, we promptly arrange shipment from our factory to Melbourne Port. The next update will be sent following confirmation of its departure.

TRANSIT

Under normal circumstances, the voyage is anticipated to take approximately three weeks, with an additional week allocated for port clearance and arrival at our Victorian distribution warehouse.

DELIVERY

Following any balances being settled, we arrange delivery with one of our local freight companies, sending the attachment directly to your work-site or one of our 102+ pick-up locations nationwide.

OVERVIEW

We take pride in our unwavering dedication to delivering unparalleled quality, exceptional customer service, and relentless commitment to innovation and excellence.

We take pride in our performance range attachments, which are crafted using premium materials sourced from industry-leading international suppliers. Our unwavering commitment to quality is evident in our unmatched priority service, ensuring prompt and efficient customer support.



INDUSTRY-LEADING INTERNATIONAL SUPPLIERS



PREMIUM ATTACHMENT CAPABILITIES



PREMIUM ATTACHMENT MATERIALS



UNMATCHED PRIORITY SERVICE & SUPPORT

MBI Multi System.

Available for 7 - 55T

The MBI Multi System, a versatile demolition tool, features interchangeable jaws for various tasks, 360° hydraulic rotation for precision, and speed valve technology for increased productivity. Its high power-to-weight ratio ensures efficient operation, while its design for easy maintenance with replaceable parts minimises downtime, making it a reliable and effective choice for demolition projects.

QUICK QUOTE

Features



Speed-Valve Technology

The inclusion of a speed valve in these systems significantly reduces the opening and closing times of the jaws. This feature not only speeds up operations but also boosts productivity, allowing for quicker completion of demolition tasks.



Large Power-To-Weight Ratio

The Multi System is designed to offer a high power-to-weight ratio, providing strong demolition force without the burden of excessive weight. This aspect is crucial for maintaining the stability and efficiency of the excavator during operations.



Easy Maintenance

The Multi System is designed for easy maintenance, with easily replaceable parts that minimize downtime. This feature ensures that the equipment can be quickly serviced and returned to operation, reducing overall project timelines.



1 Interchangeable Jaws

The Multi System offers a unique system of interchangeable jaws, allowing for multiple types of demolition tasks with a single attachment. This system enhances flexibility in various demolition scenarios, from crushing concrete to cutting metal structures.

2 Rotation Group

Equipped with 360° hydraulic rotation, the Multi System allows for precise manoeuvring and positioning. This feature is crucial for ensuring accurate demolition, particularly in tight or complex spaces, enhancing overall operational efficiency and safety.



POWERFUL ADAPTABLE RELIABLE

The MBI Multi System is a versatile and efficient demolition tool, designed to handle a wide range of tasks with its interchangeable jaws feature, allowing for crushing concrete to cutting metal structures.

It boasts a 360° hydraulic rotation for precise control in tight spaces and incorporates speed valve technology for faster jaw operation, enhancing productivity.

With a high power-to-weight ratio, it maintains stability and efficiency of the excavator.

Additionally, its ease of maintenance and replaceable parts minimize downtime, ensuring rapid return to operation.

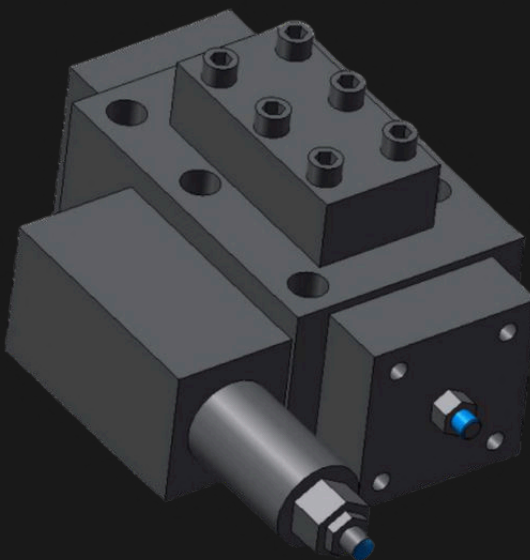
This combination of features makes the MBI Multi System a powerful, adaptable, and reliable choice for diverse demolition projects.

SPEED VALVE TECHNOLOGY

The Speed-Valve Technology integrated into the MBI Multi System offers a remarkable improvement in hydraulic efficiency.

By effectively managing the flow of hydraulic fluid within the system, the Speed Valve significantly reduces the opening and closing times of the MBI Multi System.

SPEED-VALVE TECHNOLOGY



UP TO 5 DIFFERENT JAWS TO CHOOSE FROM



SHEAR JAWS



PLATE SHEAR JAWS



COMBI CUTTER JAWS



CRUSHER JAWS



PULVERISER JAWS



SWITCH BETWEEN DIFFERENT JAW TYPES

The Multi System redefines versatility in demolition work through its interchangeable jaw options, transforming it into an indispensable tool for any demanding job site.

Designed to meet a broad spectrum of demolition needs, this system ensures peak efficiency and unmatched adaptability.

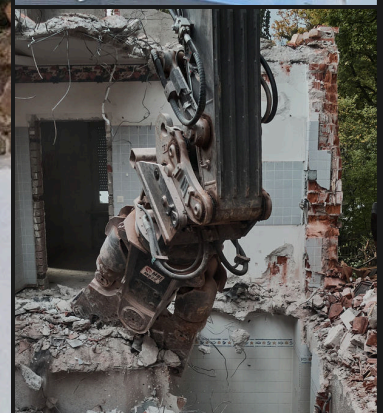
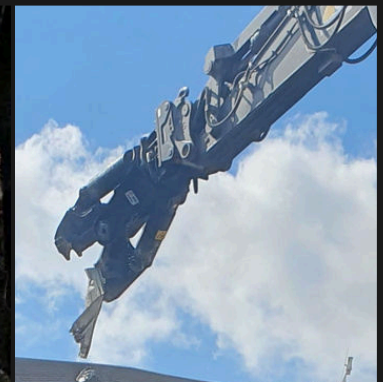
With the Multi System, operators enjoy the flexibility to quickly exchange between various jaw types, each specifically engineered for optimal performance in different tasks.

Whether it's pulverizing thick concrete, shearing complex metal structures, or slicing through heavily reinforced materials, this tool adjusts to the job seamlessly.

This unparalleled adaptability not only drastically cuts down on time spent switching out equipment but also significantly reduces costs.

By consolidating the capabilities of several specialized tools into one, the Multi System eliminates the need to invest in and maintain multiple pieces of equipment.

Making it a smart, economical choice for professionals looking to boost productivity and streamline their operations.



Partnering With MBI.



At Aussie Buckets, we're committed to delivering exceptional quality and performance. We're thrilled to partner with MBI for the production of our innovative MBI Rotating Pulveriser, a noteworthy addition to our Performance Range. Leveraging MBI's expertise, this High Performance Fixed Pulveriser boasts advanced features and design, distinguishing it within the demolition industry and ensuring outstanding efficiency and productivity.

Mantovanibenne (MBI), established in 1963, has become a leading innovator in the development and production of excavator attachments for the construction, demolition, recycling, and earth-moving industries. As the head of the multinational MBI Group, the company continues to set the industry standard with their globally recognized crushers, pulverizers, and Eagle Shears.

To ensure the safety and reliability of equipment, MBI emphasises the importance of matching the right attachment with the right machine. The company offers a diverse range of attachments for various types of construction machines and configurations, and recommends consulting with their qualified technicians for optimal equipment pairing.

MBI's global dealer network provides comprehensive support to customers, from initial consultations to after-sales service. The company operates facilities in five countries - Italy, Bulgaria, France, Germany, and China - to cater to their international clientele effectively.



MBI Company Background

At Aussie Buckets, we're committed to delivering exceptional quality and performance. We're thrilled to partner with MBI for the production of our innovative MBI Fixed Pulveriser, a noteworthy addition to our Performance Range. Leveraging MBI's expertise, this High Performance Fixed Pulveriser boasts advanced features and design, distinguishing it within the demolition industry and ensuring outstanding efficiency and productivity.

Mantovanibenne (MBI), established in 1963, has become a leading innovator in the development and production of excavator attachments for the construction, demolition, recycling, and earth-moving industries. As the head of the multinational MBI Group, the company continues to set the industry standard with their globally recognized crushers, pulverizers, and Eagle Shears.

To ensure the safety and reliability of equipment, MBI emphasises the importance of matching the right attachment with the right machine. The company offers a diverse range of attachments for various types of construction machines and configurations, and recommends consulting with their qualified technicians for optimal equipment pairing.

MBI's global dealer network provides comprehensive support to customers, from initial consultations to after-sales service. The company operates facilities in five countries - Italy, Bulgaria, France, Germany, and China - to cater to their international clientele effectively.

MBI's global dealer network provides comprehensive support to customers, from initial consultations to after-sales service. The company operates facilities in five countries - Italy, Bulgaria, France, Germany, and China - to cater to their international clientele effectively.

MBI's global dealer network provides comprehensive support to customers, from initial consultations to after-sales service. The company operates facilities in five countries - Italy, Bulgaria, France, Germany, and China - to cater to their international clientele effectively.

Call Us (03) 9917 8598

We're easy to reach, 5 days a week.



AUSSIE BUCKETS

HEAD OFFICE

501 Errard St S,
Redan VIC 3350

Appointment Only

Monday - Friday
9:00am - 5:00pm

MARKETING OFFICE

314 Montague Road,
West End, QLD, 4101

Appointment Only

Monday - Friday
9:00am - 5:00pm

WAREHOUSE & SALES

8/6 Peterpaul Way
Truganina VIC 3029

Monday - Friday
9:00am - 5:00pm

SALES & SUPPORT

sales@aussiebuckets.com.au
support@aussiebuckets.com.au

LOGISTICS TEAM

shipping@aussiebuckets.com.au



MBI[®]



MS

DEMOLITION MULTISYSTEM



MS

DEMOLITION MULTISYSTEM

The transformer machine of the MBI family. It is an attachment that can be transformed into specific tools according to the task to accomplish. Specific jaw sets, make the MS a proper crusher, pulverizer, shear, combi cutter or tank cutter.

MS LINE

A perfect tool for different jobs. All in one.

- Many **different JAW KITS** are available for the MS line, literally transforming it into the perfect tool for a wide array of specific jobs.
- Thanks to the **powerful cylinders**, the MS delivers an incredible force. In addition, **pistons are reversed** to be protected from debris and the **rod is forged** to increase durability.
- The **continuous hydraulic rotation** enables accurate tool positioning in every working environment. In addition, the double-row thrust bearing ensures **high robustness and increases safety**.
- The **speed valve** reduces opening and closing time boosting productivity.



TECHNICAL DATA

MODEL		MS09R	MS15R	MS22R	MS28R	MS50R	
EXCAVATOR WEIGHT WITH MS BUCKET PLACE	t	10-15	16-20	21-27	28-40	45-55	
EXCAVATOR WEIGHT WITH MS STICK PLACE	t	7-10	10-15	12-18	15-24	28-38	
HYDRAULIC WORKING PRESSURE	bar	300-320	320-350	320-350	320-350	320-350	
OIL FLOW	l/min	90-120	130-150	180-220	220-250	250-300	
MS + CRUSHER JAWS SET CR	TOOL WEIGHT*	kg	950	1650	2210	2900	5080
	OPENING	mm	650	750	890	975	1200
	HEIGHT	mm	1550	1860	1980	2180	2940
MS + PULVERIZER JAWS SET CP	TOOL WEIGHT*	kg	1015	1700	2250	3120	5450
	OPENING	mm	565	650	780	875	1000
	HEIGHT	mm	1485	1830	1955	2180	2870
MS + SHEAR JAWS SET SH	TOOL WEIGHT*	kg	950	1700	2200	2950	4930
	OPENING	mm	275	330	460	550	630
	HEIGHT	mm	1415	1800	1995	2185	2945
MS + COMBI CUTTER JAWS SET CC	TOOL WEIGHT*	kg	980	1700	2235	3000	5280
	OPENING	mm	585	700	830	875	1100
	HEIGHT	mm	1500	1860	2020	2170	3040
MS + PLATE SHEAR JAWS SET PSH	TOOL WEIGHT*	kg	○	○	2070	2700	4300
	OPENING	mm	○	○	300	310	360
	HEIGHT	mm	○	○	1895	2000	2760

RIF. 97878/E 04/21 REV.04 BT MS09-50 13

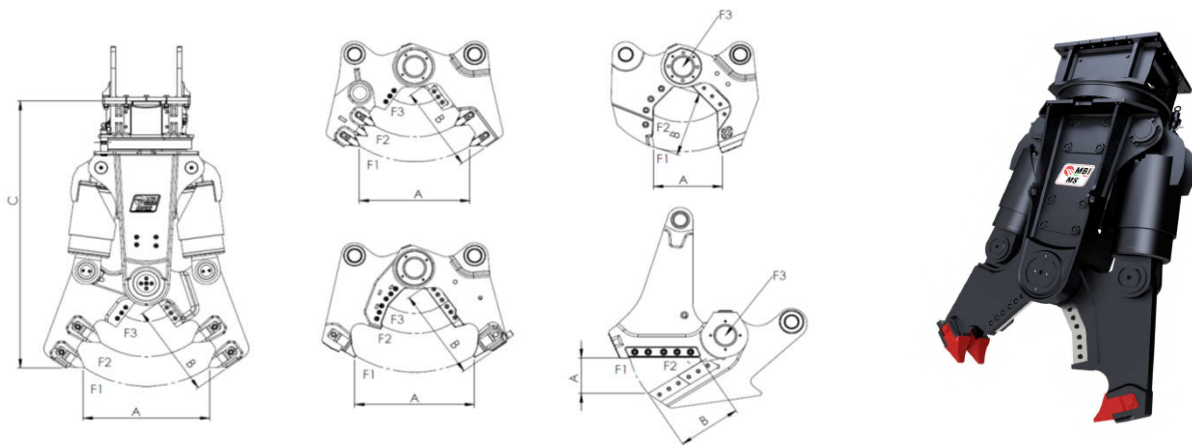
RIF. 97878/E 04/21 REV.04



We are constantly improving our products and therefore we reserve the right to change the design and technical specifications without prior notice.
* Tool weight does include Mantovanibenne top bracket. ○ Not available

MULTISYSTEM

MS09R-MS15R-MS22R-MS28R-MS50R



Dimensions

			MS09R	MS15R	MS22R	MS28R	MS50R
Jaw opening CR	A	[mm]	650	750	890	975	1200
Jaw opening CP		[mm]	565	650	780	875	1000
Jaw opening SH		[mm]	275	330	460	550	630
Jaw opening CC		[mm]	585	700	830	875	1100
Jaw opening PSH		[mm]	-	-	300	310	360
Jaw depth CR	B	[mm]	540	675	680	740	1050
Jaw depth CP		[mm]	465	600	615	720	930
Jaw depth SH		[mm]	340	475	530	625	750
Jaw depth CC		[mm]	480	650	650	710	1000
Jaw depth PSH		[mm]	-	-	450	470	490
Height with CR jaws	C	[mm]	1550	1860	1980	2180	2940
Height with CP jaws		[mm]	1485	1830	1955	2180	2870
Height with SH jaws		[mm]	1415	1800	1995	2185	2945
Height with CC jaws		[mm]	1500	1860	2020	2170	3040
Height with PSH jaws		[mm]	-	-	1895	2000	2760
Width CP jaws	L	[mm]	230	350	400	490	600

Cutting table with shear jaw SH (material used to test ST355)

			MS09R	MS15R	MS22R	MS28R	MS50R
Rod	●	[mm]	40	45	55	65	80
Tube	○	[mm]	N.D.	N.D.	N.D.	N.D.	N.D.
IPE	H	[mm]	180	200	250	360	450
HEA	H	[mm]	120	140	160	220	320
Plate	—	[mm]	8	10	12	15	18
L Profile	L	[mm]	N.D.	N.D.	N.D.	N.D.	150x18
Rail vignola	I	[mm]	N.D.	N.D.	N.D.	N.D.	50x150x150

Cutting table with plateshear jaw PSH (material used to test ST355)

			MS09R	MS15R	MS22R	MS28R	MS50R
Thickness		[mm]	-	-	15	20	25

Technical bulletin

		MS09R	MS15R	MS22R	MS28R	MS50R
Excavator weight (bucket place)	[t]	10-15	16-20	21-27	28-40	45-55
Excavator weight (stick place)	[t]	7-10	10-15	12-18	15-24	28-38
Weight with kit CR *	[kg]	950	1650	2210	2900	5080
Force at upper tips F1 (front teeth)	[t]	49	67	103	113	143
Force in the middle F2 (middle of blade)	[t]	67	97	148	167	194
Cutting force F3	[t]	140	190	272	315	406
Blade length	[mm]	151	160	160	180	275
Weight with kit CP *	[kg]	1015	1700	2250	3120	5450
Force at upper tips F1 (front teeth)	[t]	52	71	109	112	154
Force in the middle F2 (middle of blade)	[t]	68	93	147	160	222
Cutting force F3	[t]	133	188	270	311	431
Blade length	[mm]	125	160	160	180	275
Weight with kit SH *	[kg]	950	1700	2200	2950	4930
Force at upper tips F1	[t]	62	76	103	107	142
Blade force F2	[t]	132	183	239	261	370
Force at pin F3	[t]	212	365	874	976	651
Blade length	[mm]	120	175	190	230	290
Weight with kit CC *	[kg]	980	1700	2235	3000	5280
Force at upper tips F1	[t]	50	68	99	114	149
Force in the middle F2	[t]	75	92	154	181	205
Cutting force F3	[t]	114	195	229	267	320
Blade length	[mm]	250	320	320	320	550
Weight with kit PSH *	[kg]	-	-	2070	2700	4300
Force at upper tips F1	[t]	-	-	104	115	180
Blade force F2	[t]	-	-	152	266	363
Force at pin F3	[t]	-	-	1016	1015	1250
Hydraulic working pressure	[bar]	300-320	320-350	320-350	320-350	320-350
Oil flow	[l/min]	90-120	130-150	180-220	220-250	250-300
Rotation type	-----	360° H	360° H	360° H	360° H	360° H
Hydraulic motor max oil pressure	[bar]	130-150	90-100	130-150	130-150	100-115
Hydraulic motor oil flow	[l/min]	15-20	30-40	30-40	30-40	30-40
Time of closing at max oil flow	[s]	1,5	2,5	2,2	2,3	4,3
Time of opening at max oil flow	[s]	2,8	2,5	3,7	4	4,2
N° of cycles per minute at max oil flow	[cycles/min]	14	12	10	9,4	7,1
N° of revs per minute at max oil flow	[revs/min]	15	12	8,3	11	6,7
Hyd. ports size cylinder	-----	3/4" GAS	3/4" SAE 6000 p.s.i.	1" SAE 6000 p.s.i.	1" SAE 6000 p.s.i.	1" 1/4 SAE 6000 p.s.i.
Hyd. ports size rotation	-----	1/2" GAS	1/2" GAS	1/2" GAS	1/2" GAS	1/2" GAS
Hyd. port size drain line	-----	N.N.	N.N.	N.N.	N.N.	1/4" GAS
Speed valve	-----	YES	YES	YES	YES	YES
Interchangeable wear parts CR kit	-----	NO	YES	YES	YES	YES
Interchangeable wear parts CP kit	-----	NO	YES	YES	YES	YES
Interchangeable wear parts CC kit	-----	NO	YES	YES	YES	YES
Automatic grease system	-----	NO	NO	NO	NO	NO

* The tool weight, here noted, includes also the MBI's STD coupler.

MS09-MS15-MS22-MS28-MS50 are with bolted coupler.

N.N.: not needed. Refers to drain the Hydraulic rotation.

The noted performances have been achieved by the maximum pressure and capacity values.

Characteristics and specifics of product could be varied without obligation of notice.

- CR it's CRUSHERS kit.
- CP it's PULVERIZERS kit.
- SH it's SHEARS kit.
- CC it's COMBI kit.
- PSH it's PLATESHEARS kit.