



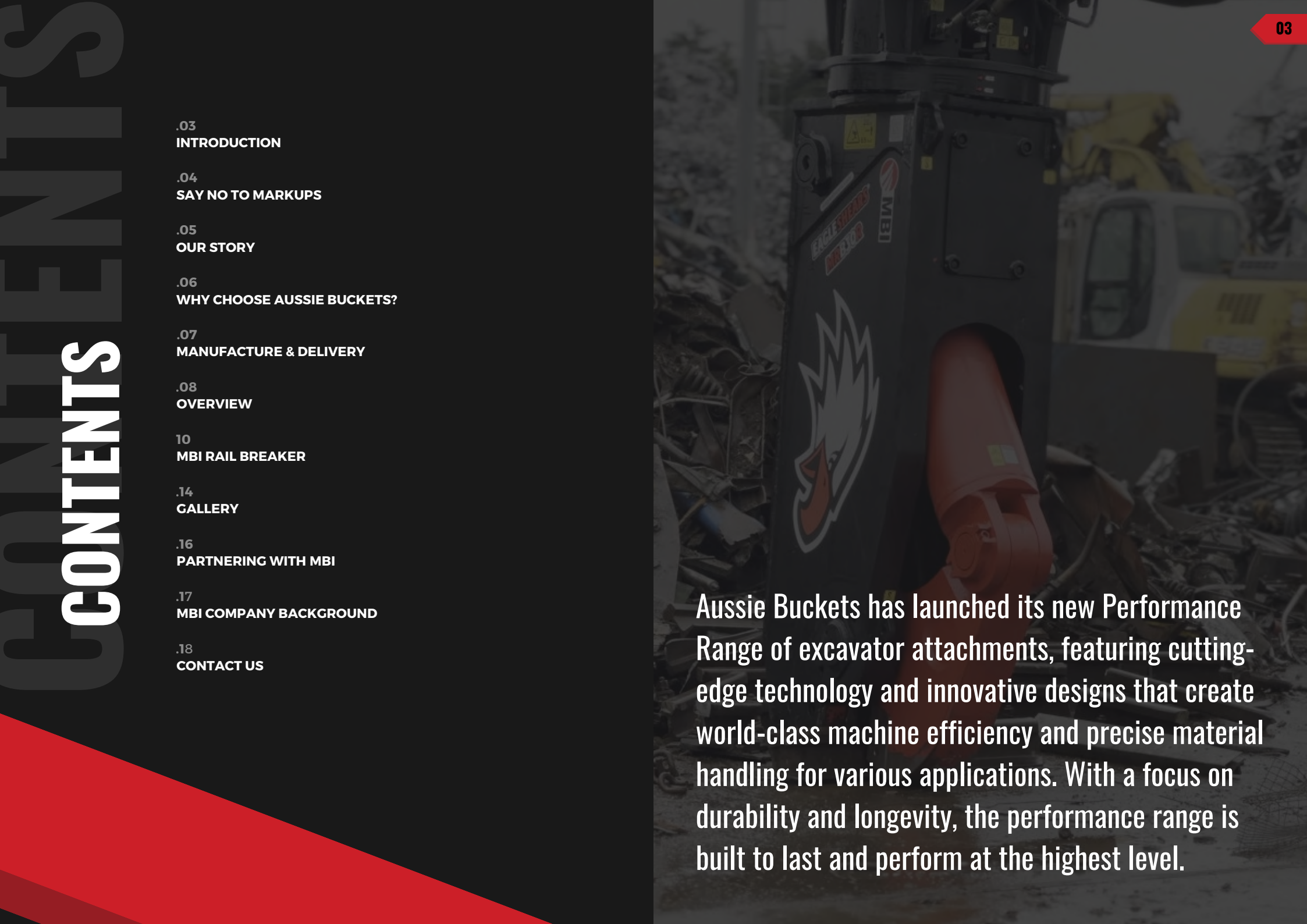
**AUSSIE BUCKETS**

**PERFORMANCE**  
RANGE

**MBI**  
**RAIL**  
**BREAKER**

# CONTENTS

.03	<b>INTRODUCTION</b>
.04	<b>SAY NO TO MARKUPS</b>
.05	<b>OUR STORY</b>
.06	<b>WHY CHOOSE AUSSIE BUCKETS?</b>
.07	<b>MANUFACTURE &amp; DELIVERY</b>
.08	<b>OVERVIEW</b>
10	<b>MBI RAIL BREAKER</b>
.14	<b>GALLERY</b>
.16	<b>PARTNERING WITH MBI</b>
.17	<b>MBI COMPANY BACKGROUND</b>
.18	<b>CONTACT US</b>



Aussie Buckets has launched its new Performance Range of excavator attachments, featuring cutting-edge technology and innovative designs that create world-class machine efficiency and precise material handling for various applications. With a focus on durability and longevity, the performance range is built to last and perform at the highest level.

## Say **No** To Markups.

**As a fundamental part of society, operators in the excavation industry deserve to be looked out for.**

Aussie Buckets specializes in offering an extensive selection of robust and durable excavator grabs and buckets designed for heavy-duty applications.

Our product range includes 100% customized attachments that are compatible with major OEM brands such as Cat, Komatsu, JCB, and Kubota. With over 102 pickup locations across the nation, a 12-month warranty, and lifetime after-sales support, we are committed to providing the highest level of customer satisfaction.

Aussie Buckets boasts a team of highly skilled and experienced engineers who are proficient in designing and fabricating attachments that are custom-built to meet the specific requirements of your machine.

As a leading supplier of attachments in Australia, we pride ourselves on using top-quality materials and cutting-edge technology to deliver superior products that are capable of withstanding the challenging conditions of Australian landscapes.



## Our Story.

**A mission to provide hard-working Australian operators with high-quality products at a fair price.**

Aussie Buckets, established in 2018, is a subsidiary of the Kuzmich Watts & Tomich Group Pty Ltd Company. Our inception was driven by the need to offer Australian operators reliable and high-quality products at fair and competitive prices.

Our attachments are crafted to the highest quality standards and constructed using heavy-duty materials, thanks to our global manufacturing capabilities. With rigorous design and testing in the most demanding environments, you can trust that our attachments are built to endure the challenging landscapes of Australia.

Not only do we prioritize durability and performance, but we also offer cost-effective solutions that can save you thousands in upfront costs. Join the movement and say NO to unjustified markups by choosing Aussie Buckets for your attachment needs. Experience the difference in quality, reliability, and affordability with us.

## Why Choose Aussie Buckets?

Aussie Buckets is a reputable provider of premium heavy-duty excavator grabs and buckets. Our extensive range of attachments are fully customizable to suit all major OEM brands, including Cat, Komatsu, JCB, and Kubota, ensuring a perfect fit for your specific equipment.

With a vast network of 102+ pickup locations across the nation, we are committed to making our products easily accessible to our valued customers. In addition, our attachments are backed by a comprehensive 12-month warranty, providing peace of mind and assurance of our commitment to quality.

At Aussie Buckets, we go beyond just selling attachments - we provide lifetime after-sales support to our customers. Our team of experts is readily available to assist with any queries, concerns, or technical assistance, ensuring a seamless experience throughout the lifetime of your attachment.

We take pride in offering affordable excavator attachments without compromising on quality or performance. We believe that hard-working Aussies deserve the best, and it's our mission to deliver exceptional products that meet their needs and exceed their expectations.

Choose Aussie Buckets for superior excavator attachments that are tailored to your requirements, backed by reliable warranty and lifetime after-sales support. Experience the difference in quality and service with our dedicated team.

### CORE VALUES

We pride ourselves in delivering exceptional quality, unmatched customer service, and relentless commitment to innovation and excellence.

#### ► 12-MONTH WARRANTY

Our 12-month warranty, provided with every MBI Scrap Shear 3, offers unparalleled peace of mind, assuring our customers of the durability, reliability, and quality of our products for an extended period of time.

#### ► LIFETIME SUPPORT

Our lifetime after-sales support guarantees ongoing assistance and technical guidance to our customers, ensuring a seamless experience and maximizing the lifespan of our excavator attachments.

#### ► LARGEST RANGE IN AUSTRALIA

As the leading provider in Australia, we boast the largest and most comprehensive range of excavator attachments, offering a wide selection of options to cater to various applications and equipment brands.

#### ► 100% PURPOSE BUILT

Our attachments are exclusively designed and fabricated 100% purpose-built to meet the unique requirements of our customers, ensuring optimal performance and satisfaction with our products.



**Aidan Kuzmich**  
MANAGING DIRECTOR

*A. Kuzmich*

## Manufacture & Delivery.

Our extensive product range is meticulously engineered to excel in the most challenging environments, and our reputation as a trusted provider of durable and dependable materials handling equipment is widely recognized in the industry.

### MANUFACTURE

In the first four weeks, you'll receive updates at the following milestones; 50% production progress and 100% production completed alongside product photos.

### IMPORT

Following fabrication completion, we promptly arrange shipment from our factory to Melbourne Port. The next update will be sent following confirmation of its departure.

### TRANSIT

Under normal circumstances, the voyage is anticipated to take approximately three weeks, with an additional week allocated for port clearance and arrival at our Victorian distribution warehouse.

### DELIVERY

Following any balances being settled, we arrange delivery with one of our local freight companies, sending the attachment directly to your work-site or one of our 102+ pick-up locations nationwide.

# OVERVIEW

We take pride in our unwavering dedication to delivering unparalleled quality, exceptional customer service, and relentless commitment to innovation and excellence.

We take pride in our performance range attachments, which are crafted using premium materials sourced from industry-leading international suppliers. Our unwavering commitment to quality is evident in our unmatched priority service, ensuring prompt and efficient customer support.



**INDUSTRY-LEADING INTERNATIONAL SUPPLIERS**



**PREMIUM ATTACHMENT CAPABILITIES**



**PREMIUM ATTACHMENT MATERIALS**



**UNMATCHED PRIORITY SERVICE & SUPPORT**

# MBI Rail Breaker.

Available for 18 - 35T

The MBI Rail Breaker is engineered for durability and ease of maintenance in rail recycling, one of the most challenging tasks for such machinery. This design significantly increases the machine's lifespan by reducing damage to the mobile jaw and fixed body. Maintenance is simplified and less frequent due to the innovative blade shape, which minimises wear and tear and avoids specialised maintenance requirements. The MBI Rail Breakers blades are strategically designed to discharge force effectively, extending the machine's overall life while maintaining efficiency in rail-breaking tasks.

## QUICK QUOTE

## Features



### Simplified Maintenance

Due to its innovative design, the MBI Rail Breaker demands less frequent and simpler maintenance, effectively saving time and resources. This streamlined approach ensures reliable operation with minimal downtime.



### Effective Force Discharge

The blade design of the Rail Breaker is meticulously engineered to allow for efficient force discharge during rail-breaking tasks. This key feature ensures that operational efficiency is maintained throughout the process, reducing the time and effort required for each task. The strategic allocation of force not only enhances the machine's performance but also contributes to longer-lasting functionality and reduced maintenance needs.



### Warranty You Can Trust

12 month warranty and lifetime after-sales support with our entire range.

### 1 Scrap Shear 3 Design

The Scrap Shear 3 Design incorporated into the MBI Rail Breaker is a specialized feature focusing on enhancing the machine's efficiency and durability, particularly in the demanding task of rail recycling. With robust construction and advanced engineering to ensure the machine can handle the stresses of cutting and breaking rail materials.

### 2 Innovative Blade Shape

This feature enhances the longevity of the crusher. The cutting edges can be rotated and used on all sides, significantly extending the life of the crusher and reducing the need for frequent blade replacements.

### 3 Durable Mobile Jaw & Fixed Body

The MBI Rail Breaker features an innovative design that dramatically enhances the durability of both its mobile jaw and fixed body. This engineering focus minimises wear and tear, substantially extending the overall service life of the machine. By reducing potential damage during operation, the Rail Breaker ensures robust performance and reliability in even the most demanding environments.



# SCRAP SHEAR 3 DESIGN

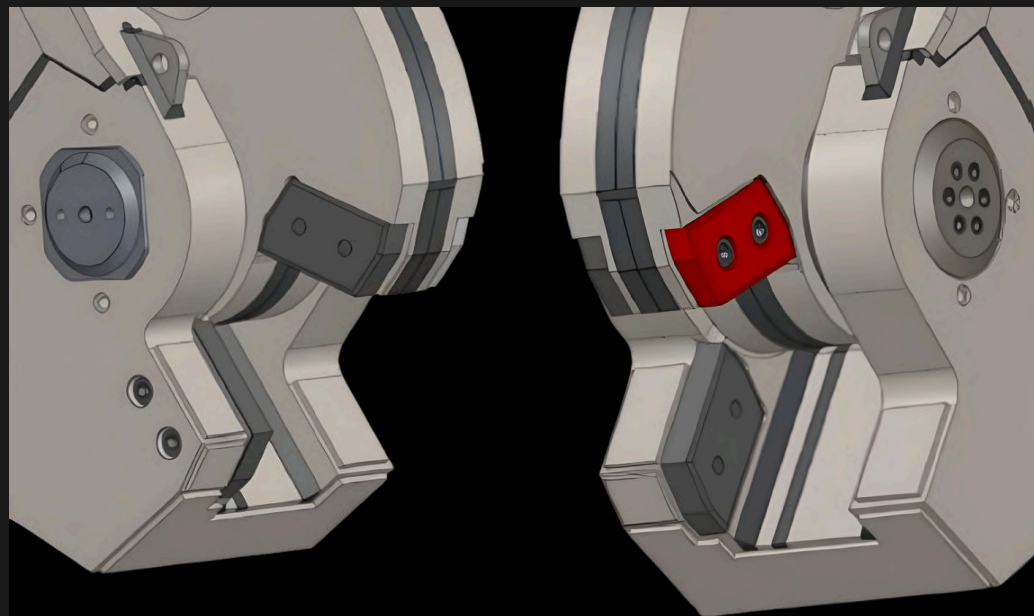
The Scrap Shear 3 Design, a hallmark feature of the MBI Rail Breaker, elevates the machine's capabilities in the challenging arena of rail recycling.

Engineered for both supreme efficiency and exceptional durability, this innovative design addresses the intense demands of cutting and breaking rail materials.

Constructed using only the most robust and high-strength materials, it stands as a testament to advanced engineering principles aimed at extending the lifespan and performance of the MBI Rail Breakers.

This design is strategically focused on reducing wear and tear, thereby enhancing the machine's resilience and operational integrity in environments characterized by extreme stress.

With these enhancements, the MBI Rail Breaker ensures continuous, reliable performance in even the most demanding situations, making it an indispensable asset in rail recycling operations.



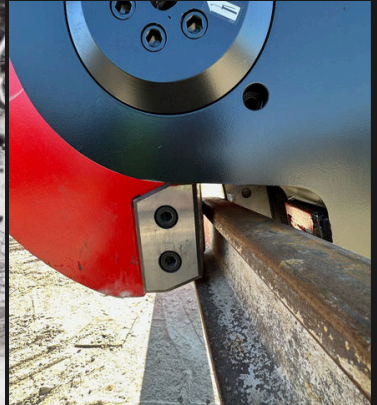
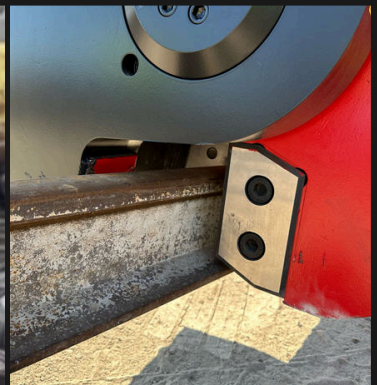
The MBI Rail Breaker introduces a revolutionary design aimed at minimizing maintenance demands, setting a new standard for operational efficiency. By strategically reducing wear on vital components, this cutting-edge machine ensures prolonged durability while streamlining upkeep tasks.

The MBI Rail Breaker's innovative construction not only lessens the frequency of maintenance but also enhances overall operational efficiency and cost-effectiveness.

Its thoughtful engineering allows operators to focus more on core tasks, confident in the reliability and longevity of their equipment.

With reduced downtime and streamlined maintenance routines, the MBI Rail Breaker empowers operators to maximize productivity and achieve optimal performance.

**ENHANCES  
OPERATIONAL  
AND COST  
EFFECTIVENESS**





## Partnering With MBI.



At Aussie Buckets, we're committed to delivering exceptional quality and performance. We're thrilled to partner with MBI for the production of our innovative MBI Rotating Pulveriser, a noteworthy addition to our Performance Range. Leveraging MBI's expertise, this High Performance Fixed Pulveriser boasts advanced features and design, distinguishing it within the demolition industry and ensuring outstanding efficiency and productivity.

Mantovanibenne (MBI), established in 1963, has become a leading innovator in the development and production of excavator attachments for the construction, demolition, recycling, and earth-moving industries. As the head of the multinational MBI Group, the company continues to set the industry standard with their globally recognized crushers, pulverizers, and Eagle Shears.

To ensure the safety and reliability of equipment, MBI emphasises the importance of matching the right attachment with the right machine. The company offers a diverse range of attachments for various types of construction machines and configurations, and recommends consulting with their qualified technicians for optimal equipment pairing.

MBI's global dealer network provides comprehensive support to customers, from initial consultations to after-sales service. The company operates facilities in five countries - Italy, Bulgaria, France, Germany, and China - to cater to their international clientele effectively.



## MBI Company Background

At Aussie Buckets, we're committed to delivering exceptional quality and performance. We're thrilled to partner with MBI for the production of our innovative MBI Fixed Pulveriser, a noteworthy addition to our Performance Range. Leveraging MBI's expertise, this High Performance Fixed Pulveriser boasts advanced features and design, distinguishing it within the demolition industry and ensuring outstanding efficiency and productivity.

Mantovanibenne (MBI), established in 1963, has become a leading innovator in the development and production of excavator attachments for the construction, demolition, recycling, and earth-moving industries. As the head of the multinational MBI Group, the company continues to set the industry standard with their globally recognized crushers, pulverizers, and Eagle Shears.

To ensure the safety and reliability of equipment, MBI emphasises the importance of matching the right attachment with the right machine. The company offers a diverse range of attachments for various types of construction machines and configurations, and recommends consulting with their qualified technicians for optimal equipment pairing.

MBI's global dealer network provides comprehensive support to customers, from initial consultations to after-sales service. The company operates facilities in five countries - Italy, Bulgaria, France, Germany, and China - to cater to their international clientele effectively.

MBI's global dealer network provides comprehensive support to customers, from initial consultations to after-sales service. The company operates facilities in five countries - Italy, Bulgaria, France, Germany, and China - to cater to their international clientele effectively.

MBI's global dealer network provides comprehensive support to customers, from initial consultations to after-sales service. The company operates facilities in five countries - Italy, Bulgaria, France, Germany, and China - to cater to their international clientele effectively.

# Call Us (03) 9917 8598

We're easy to reach, 5 days a week.



## AUSSIE BUCKETS

### HEAD OFFICE

501 Errard St S,  
Redan VIC 3350

*\*Appointment Only\**

Monday - Friday  
9:00am - 5:00pm

### MARKETING OFFICE

314 Montague Road,  
West End, QLD, 4101

*\*Appointment Only\**

Monday - Friday  
9:00am - 5:00pm

### WAREHOUSE & SALES

8/6 Peterpaul Way  
Truganina VIC 3029

Monday - Friday  
9:00am - 5:00pm

### SALES & SUPPORT

[sales@aussiebuckets.com.au](mailto:sales@aussiebuckets.com.au)  
[support@aussiebuckets.com.au](mailto:support@aussiebuckets.com.au)

### LOGISTICS TEAM

[shipping@aussiebuckets.com.au](mailto:shipping@aussiebuckets.com.au)