



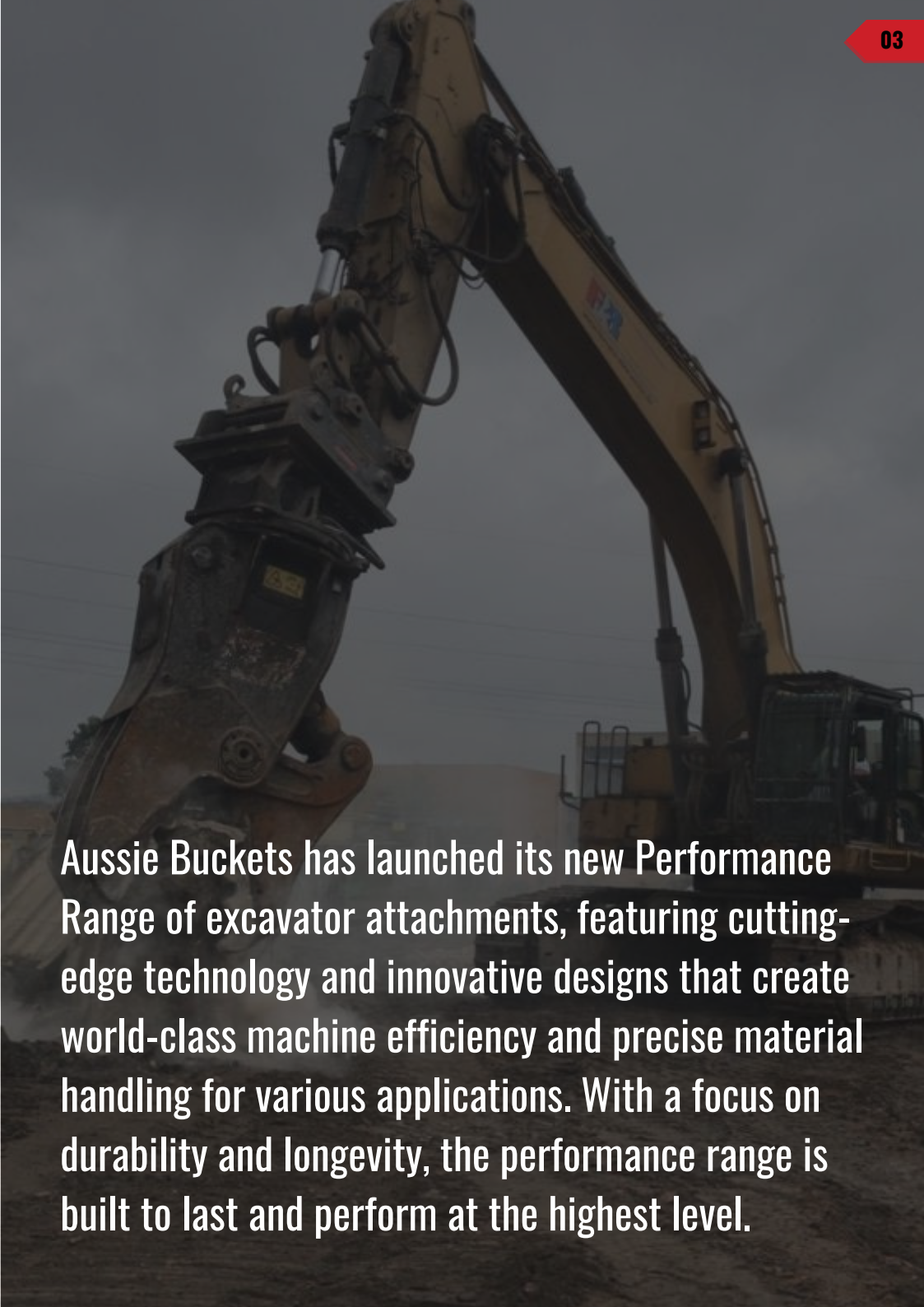
AUSSIE BUCKETS

PERFORMANCE
RANGE

MBI
ROTATING
PULVERISER

CONTENTS

.03	INTRODUCTION
.04	SAY NO TO MARKUPS
.05	OUR STORY
.06	WHY CHOOSE AUSSIE BUCKETS?
.07	MANUFACTURE & DELIVERY
.08	OVERVIEW
10	MBI ROTATING PULVERISER
.16	GALLERY
.18	PARTNERING WITH MBI
.19	MBI COMPANY BACKGROUND
.20	CONTACT US



Aussie Buckets has launched its new Performance Range of excavator attachments, featuring cutting-edge technology and innovative designs that create world-class machine efficiency and precise material handling for various applications. With a focus on durability and longevity, the performance range is built to last and perform at the highest level.

Say **No** To Markups.

As a fundamental part of society, operators in the excavation industry deserve to be looked out for.

Aussie Buckets specializes in offering an extensive selection of robust and durable excavator grabs and buckets designed for heavy-duty applications.

Our product range includes 100% customized attachments that are compatible with major OEM brands such as Cat, Komatsu, JCB, and Kubota. With over 102 pickup locations across the nation, a 12-month warranty, and lifetime after-sales support, we are committed to providing the highest level of customer satisfaction.

Aussie Buckets boasts a team of highly skilled and experienced engineers who are proficient in designing and fabricating attachments that are custom-built to meet the specific requirements of your machine.

As a leading supplier of attachments in Australia, we pride ourselves on using top-quality materials and cutting-edge technology to deliver superior products that are capable of withstanding the challenging conditions of Australian landscapes.



Our Story.

A mission to provide hard-working Australian operators with high-quality products at a fair price.

Aussie Buckets, established in 2018, is a subsidiary of the Kuzmich Watts & Tomich Group Pty Ltd Company. Our inception was driven by the need to offer Australian operators reliable and high-quality products at fair and competitive prices.

Our attachments are crafted to the highest quality standards and constructed using heavy-duty materials, thanks to our global manufacturing capabilities. With rigorous design and testing in the most demanding environments, you can trust that our attachments are built to endure the challenging landscapes of Australia.

Not only do we prioritize durability and performance, but we also offer cost-effective solutions that can save you thousands in upfront costs. Join the movement and say NO to unjustified markups by choosing Aussie Buckets for your attachment needs. Experience the difference in quality, reliability, and affordability with us.

Why Choose Aussie Buckets?

Aussie Buckets is a reputable provider of premium heavy-duty excavator grabs and buckets. Our extensive range of attachments are fully customizable to suit all major OEM brands, including Cat, Komatsu, JCB, and Kubota, ensuring a perfect fit for your specific equipment.

With a vast network of 102+ pickup locations across the nation, we are committed to making our products easily accessible to our valued customers. In addition, our attachments are backed by a comprehensive 12-month warranty, providing peace of mind and assurance of our commitment to quality.

At Aussie Buckets, we go beyond just selling attachments - we provide lifetime after-sales support to our customers. Our team of experts is readily available to assist with any queries, concerns, or technical assistance, ensuring a seamless experience throughout the lifetime of your attachment.

We take pride in offering affordable excavator attachments without compromising on quality or performance. We believe that hard-working Aussies deserve the best, and it's our mission to deliver exceptional products that meet their needs and exceed their expectations.

Choose Aussie Buckets for superior excavator attachments that are tailored to your requirements, backed by reliable warranty and lifetime after-sales support. Experience the difference in quality and service with our dedicated team.

CORE VALUES

We pride ourselves in delivering exceptional quality, unmatched customer service, and relentless commitment to innovation and excellence.

► 12-MONTH WARRANTY

Our 12-month warranty, provided with every MBI Rotating Pulveriser, offers unparalleled peace of mind, assuring our customers of the durability, reliability, and quality of our products for an extended period of time.

► LIFETIME SUPPORT

Our lifetime after-sales support guarantees ongoing assistance and technical guidance to our customers, ensuring a seamless experience and maximizing the lifespan of our excavator attachments.

► LARGEST RANGE IN AUSTRALIA

As the leading provider in Australia, we boast the largest and most comprehensive range of excavator attachments, offering a wide selection of options to cater to various applications and equipment brands.

► 100% PURPOSE BUILT

Our attachments are exclusively designed and fabricated 100% purpose-built to meet the unique requirements of our customers, ensuring optimal performance and satisfaction with our products.



Aidan Kuzmich
MANAGING DIRECTOR

A. Kuzmich

Manufacture & Delivery.

Our extensive product range is meticulously engineered to excel in the most challenging environments, and our reputation as a trusted provider of durable and dependable materials handling equipment is widely recognized in the industry.

MANUFACTURE

In the first four weeks, you'll receive updates at the following milestones; 50% production progress and 100% production completed alongside product photos.

IMPORT

Following fabrication completion, we promptly arrange shipment from our factory to Melbourne Port. The next update will be sent following confirmation of its departure.

TRANSIT

Under normal circumstances, the voyage is anticipated to take approximately three weeks, with an additional week allocated for port clearance and arrival at our Victorian distribution warehouse.

DELIVERY

Following any balances being settled, we arrange delivery with one of our local freight companies, sending the attachment directly to your work-site or one of our 102+ pick-up locations nationwide.

OVERVIEW

We take pride in our unwavering dedication to delivering unparalleled quality, exceptional customer service, and relentless commitment to innovation and excellence.

We take pride in our performance range attachments, which are crafted using premium materials sourced from industry-leading international suppliers. Our unwavering commitment to quality is evident in our unmatched priority service, ensuring prompt and efficient customer support.



INDUSTRY-LEADING INTERNATIONAL SUPPLIERS



PREMIUM ATTACHMENT CAPABILITIES



PREMIUM ATTACHMENT MATERIALS



UNMATCHED PRIORITY SERVICE & SUPPORT

MBI Rotating Pulveriser.

Available for 10 - 95T

The MBI Rotating Pulveriser is a versatile, powerful demolition attachment designed for both primary and secondary demolition tasks. With a reinforced structure, hydraulic rotation, Speed-Valve technology, and interchangeable plates available in two tothing patterns, it ensures durability, precise positioning, and improved productivity. This attachment simplifies recycling and disposal processes by separating concrete from iron reinforcement while offering real-time performance tracking for optimal efficiency.

QUICK QUOTE

Features



Speed-Valve Technology

The Speed-Valve Technology incorporated in the MBI Rotating Pulveriser significantly reduces opening and closing times during demolition tasks. This innovative feature contributes to increased productivity and efficiency by minimising delays and ensuring smoother operation.



Concrete and Iron Separation

The MBI Rotating Pulveriser is engineered to separate the concrete from the inner iron reinforcement during the crushing process. This capability makes recycling and disposal more efficient, reducing the environmental impact of demolition activities and contributing to a more sustainable construction industry.



Demolition Specific Oriented Design

The MBI Rotating Pulveriser's specific mouth design has been developed for effective ground demolition. By optimising the crushing process and enhancing the pulveriser's ability to break through concrete, this design feature significantly improves overall demolition efficiency and productivity.



1 Reinforced Structure

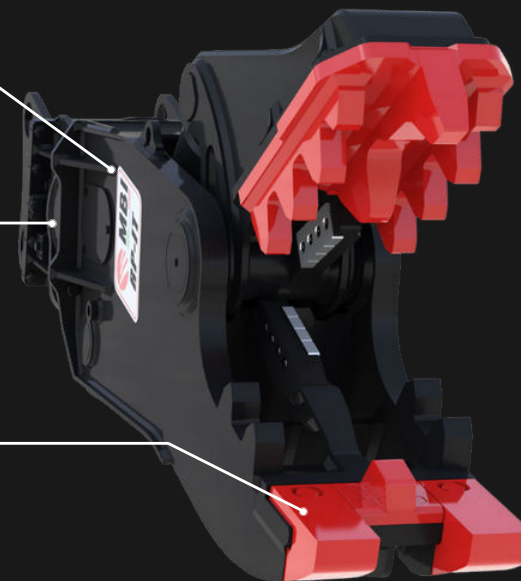
Designed to withstand the most challenging demolition tasks, the MBI Rotating Pulveriser's reinforced structure allows for the effective demolition of reinforced concrete, even at height. This robust design ensures the pulveriser's durability and longevity, enabling it to tackle the most demanding projects with ease.

2 Hydraulic Rotation

The hydraulic rotation feature of the MBI Rotating Pulveriser offers precise positioning during both in height demolitions and ground operations. By allowing for optimal control and manoeuvrability, this feature enhances the overall performance of the attachment and helps operators achieve better results in various demolition scenarios.

3 Interchangeable Plates

Featuring interchangeable plates made up of two independent parts, the MBI Rotating Pulveriser allows for quick replacement of worn teeth. These plates are available in two versions with different tothing patterns to adapt to primary or secondary demolition tasks, ensuring versatility and reduced downtime for maintenance.



EXCEPTIONAL CONCRETE & IRON SEPERATION CAPABILITIES

The Concrete and Iron Separation feature embedded in our MBI Fixed Pulveriser offers a valuable proposition for waste management in the construction sector.

This innovative function is configured to streamline the segregation of concrete and iron materials, thereby fostering a more sustainable approach to demolition tasks.

By moderating the volume of waste destined for landfills, this feature plays a significant role in mitigating the environmental implications associated with construction activities.

In addition, the capacity to effectively isolate these materials optimises the recycling process and can potentially translate into noteworthy cost savings and enhanced operational efficiency for users.

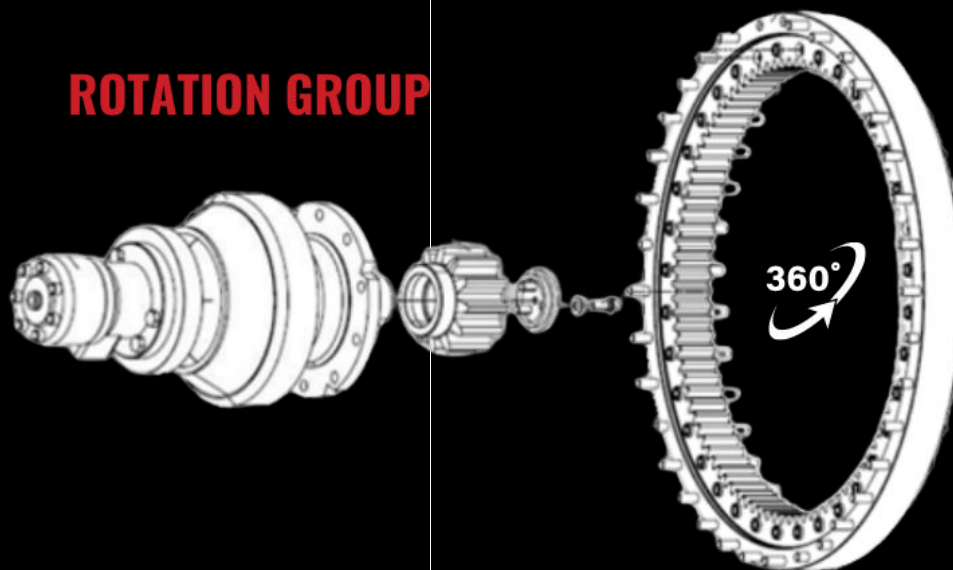
The MBI Fixed Pulveriser, with this unique feature, represents a strategic blend of innovation and responsibility, reflecting our commitment to sustainability without compromising on efficiency or economic viability.

The adoption of this innovative technology in the MBI Fixed Pulveriser demonstrates an anticipatory response to the increasing demand for sustainable solutions within the construction industry.

CONCRETE AND IRON SEPERATION



ROTATION GROUP



THRUST BEARING

The Hydraulic Rotation feature in the MBI Rotating Pulveriser is a sophisticated system designed to enhance the attachment's manoeuvrability and precision during demolition tasks.

This system allows operators to adjust the position and angle of the pulveriser with ease and accuracy, ensuring optimal alignment with the targeted material.

By enabling precise positioning of the attachment, the Hydraulic Rotation system contributes to efficient demolition, minimising the risk of collateral damage to surrounding structures or materials.

This feature also allows operators to work in tight spaces or at varying heights, adapting to the specific requirements of each demolition project.

The Hydraulic Rotation system is a key element in the MBI Rotating Pulveriser, offering improved control and adaptability during demolition tasks.

This feature greatly enhances the pulveriser's effectiveness, making it a valuable addition to any demolition project.

UNRIVALED HYDRAULIC ROTATION SYSTEM

SPEED-VALVE TECHNOLOGY

ADVANCED SPEED-VALVE TECHNOLOGY

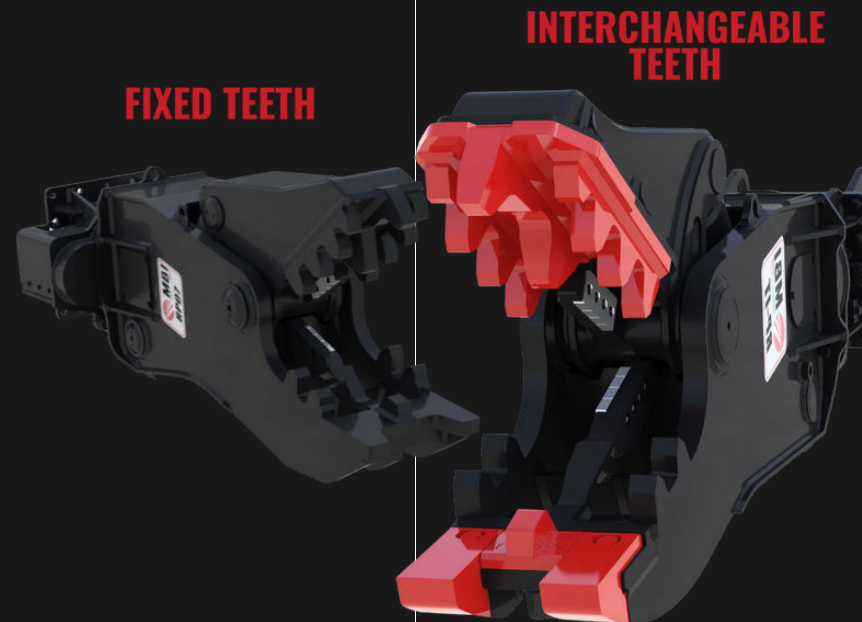
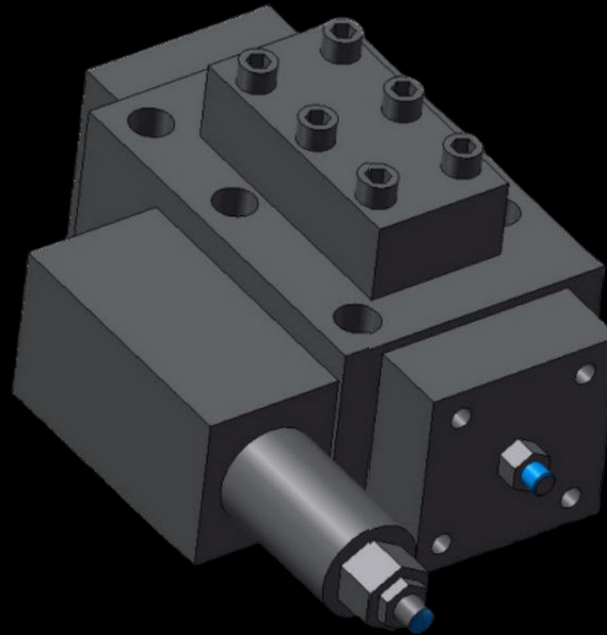
The Speed-Valve Technology is an advanced feature incorporated in the MBI Rotating Pulveriser, designed to significantly enhance the attachment's efficiency and productivity.

This innovative hydraulic valve system optimises the flow of hydraulic fluid within the pulveriser, which in turn reduces the time taken for the jaws to open and close during demolition tasks.

By minimising delays and ensuring a smoother operation, the Speed-Valve Technology allows operators to complete jobs more quickly, leading to increased productivity and cost-effectiveness on the worksite.

Additionally, the improved fluid dynamics within the hydraulic system help to reduce stress on the components, prolonging the attachment's lifespan and reducing the need for maintenance.

Speed-Valve Technology is a crucial feature that streamlines the operation of the High Performance Rotating Pulveriser, providing better efficiency, higher productivity, and extended equipment life, making it a valuable addition to any demolition project.



The Interchangeable Plates feature is an integral component of the MPI Rotating Pulveriser.

It brings a high degree of versatility and adaptability to the attachment, enabling it to effectively handle a multitude of demolition tasks.

These plates are made up of two independent parts, and their design allows for a quick and efficient replacement as the teeth wear down.

This rapid change capability drastically reduces downtime for maintenance, ensuring the pulveriser continues to deliver consistent and reliable performance, regardless of the working conditions.

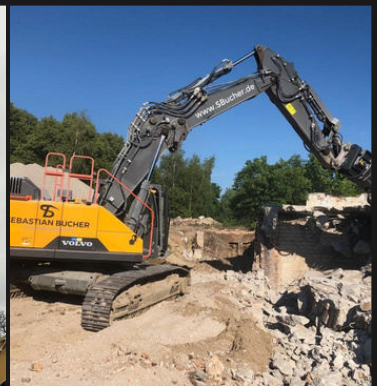
The interchangeable plates are available in two distinct tothing patterns. This enables the pulveriser to be easily configured for either primary or secondary demolition tasks.

This flexibility is a significant advantage in the field, as it allows operators to tackle a broad range of projects using a single, versatile attachment, thereby maximising both the value and utility of their investment.

The quick replacement of worn teeth also means longer operational times and less frequent maintenance intervals.

This results in increased productivity and cost-effectiveness in the long term. The plates are made using a fusion process, ensuring high resistance to wear and tear, further enhancing the overall durability and longevity of the pulveriser.

UNMATCHED VERSATILITY & ADAPTABILITY



Partnering With MBI.



At Aussie Buckets, we're committed to delivering exceptional quality and performance. We're thrilled to partner with MBI for the production of our innovative MBI Rotating Pulveriser, a noteworthy addition to our Performance Range. Leveraging MBI's expertise, this High Performance Fixed Pulveriser boasts advanced features and design, distinguishing it within the demolition industry and ensuring outstanding efficiency and productivity.

Mantovanibenne (MBI), established in 1963, has become a leading innovator in the development and production of excavator attachments for the construction, demolition, recycling, and earth-moving industries. As the head of the multinational MBI Group, the company continues to set the industry standard with their globally recognized crushers, pulverizers, and Eagle Shears.

To ensure the safety and reliability of equipment, MBI emphasises the importance of matching the right attachment with the right machine. The company offers a diverse range of attachments for various types of construction machines and configurations, and recommends consulting with their qualified technicians for optimal equipment pairing.

MBI's global dealer network provides comprehensive support to customers, from initial consultations to after-sales service. The company operates facilities in five countries - Italy, Bulgaria, France, Germany, and China - to cater to their international clientele effectively.



MBI Company Background

At Aussie Buckets, we're committed to delivering exceptional quality and performance. We're thrilled to partner with MBI for the production of our innovative MBI Fixed Pulveriser, a noteworthy addition to our Performance Range. Leveraging MBI's expertise, this High Performance Fixed Pulveriser boasts advanced features and design, distinguishing it within the demolition industry and ensuring outstanding efficiency and productivity.

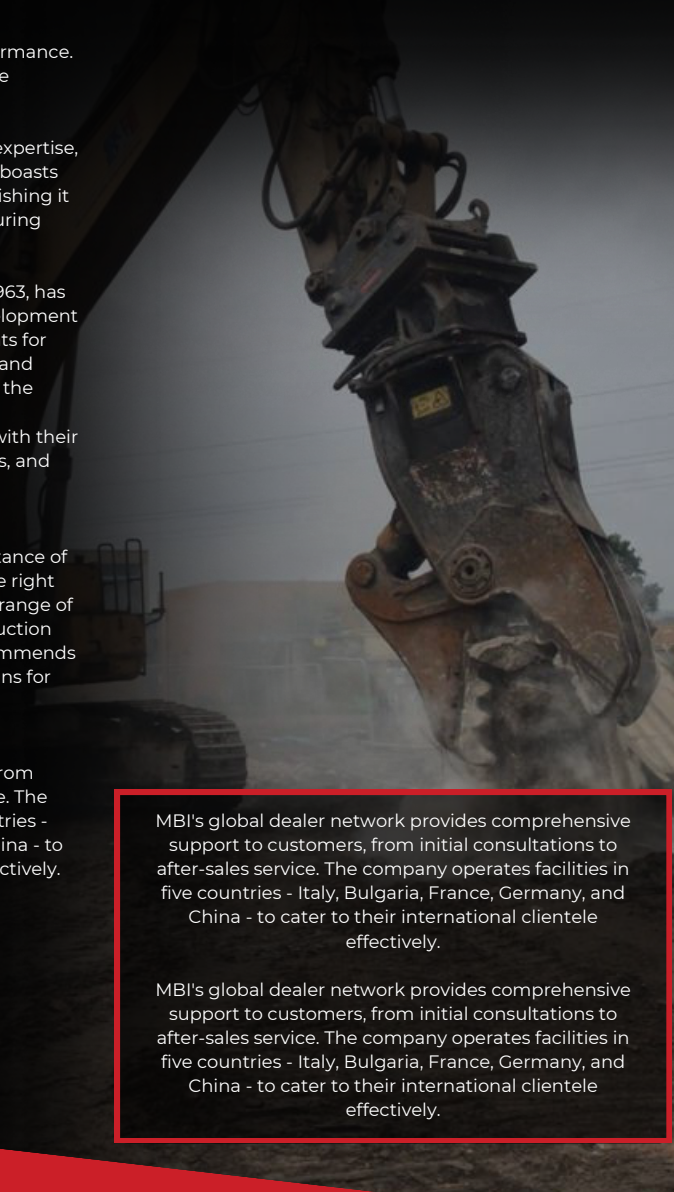
Mantovanibenne (MBI), established in 1963, has become a leading innovator in the development and production of excavator attachments for the construction, demolition, recycling, and earth-moving industries. As the head of the multinational MBI Group, the company continues to set the industry standard with their globally recognized crushers, pulverizers, and Eagle Shears.

To ensure the safety and reliability of equipment, MBI emphasises the importance of matching the right attachment with the right machine. The company offers a diverse range of attachments for various types of construction machines and configurations, and recommends consulting with their qualified technicians for optimal equipment pairing.

MBI's global dealer network provides comprehensive support to customers, from initial consultations to after-sales service. The company operates facilities in five countries - Italy, Bulgaria, France, Germany, and China - to cater to their international clientele effectively.

MBI's global dealer network provides comprehensive support to customers, from initial consultations to after-sales service. The company operates facilities in five countries - Italy, Bulgaria, France, Germany, and China - to cater to their international clientele effectively.

MBI's global dealer network provides comprehensive support to customers, from initial consultations to after-sales service. The company operates facilities in five countries - Italy, Bulgaria, France, Germany, and China - to cater to their international clientele effectively.



Call Us (03) 9917 8598

We're easy to reach, 5 days a week.

**WATCH IT
IN ACTION**



AUSSIE BUCKETS

HEAD OFFICE

501 Errard St S,
Redan VIC 3350

Appointment Only

Monday - Friday
9:00am - 5:00pm

MARKETING OFFICE

314 Montague Road,
West End, QLD, 4101

Appointment Only

Monday - Friday
9:00am - 5:00pm

WAREHOUSE & SALES

8/6 Peterpaul Way
Truganina VIC 3029

Monday - Friday
9:00am - 5:00pm

SALES & SUPPORT

sales@aussiebuckets.com.au
support@aussiebuckets.com.au

LOGISTICS TEAM

shipping@aussiebuckets.com.au