



AUSSIE BUCKETS

PERFORMANCE
RANGE

MBI
SCRAP
SHEAR 2

CONTENTS

.03	INTRODUCTION
.04	SAY NO TO MARKUPS
.05	OUR STORY
.06	WHY CHOOSE AUSSIE BUCKETS?
.07	MANUFACTURE & DELIVERY
.08	OVERVIEW
10	MBI SCRAP SHEAR 2
.16	GALLERY
.18	PARTNERING WITH MBI
.19	MBI COMPANY BACKGROUND
.20	PRODUCT DIMENTION
.28	CONTACT US



Aussie Buckets has launched its new Performance Range of excavator attachments, featuring cutting-edge technology and innovative designs that create world-class machine efficiency and precise material handling for various applications. With a focus on durability and longevity, the performance range is built to last and perform at the highest level.

Say **No** To Markups.

As a fundamental part of society, operators in the excavation industry deserve to be looked out for.

Aussie Buckets specializes in offering an extensive selection of robust and durable excavator grabs and buckets designed for heavy-duty applications.

Our product range includes 100% customized attachments that are compatible with major OEM brands such as Cat, Komatsu, JCB, and Kubota. With over 102 pickup locations across the nation, a 12-month warranty, and lifetime after-sales support, we are committed to providing the highest level of customer satisfaction.

Aussie Buckets boasts a team of highly skilled and experienced engineers who are proficient in designing and fabricating attachments that are custom-built to meet the specific requirements of your machine.

As a leading supplier of attachments in Australia, we pride ourselves on using top-quality materials and cutting-edge technology to deliver superior products that are capable of withstanding the challenging conditions of Australian landscapes.



Our Story.

A mission to provide hard-working Australian operators with high-quality products at a fair price.

Aussie Buckets, established in 2018, is a subsidiary of the Kuzmich Watts & Tomich Group Pty Ltd Company. Our inception was driven by the need to offer Australian operators reliable and high-quality products at fair and competitive prices.

Our attachments are crafted to the highest quality standards and constructed using heavy-duty materials, thanks to our global manufacturing capabilities. With rigorous design and testing in the most demanding environments, you can trust that our attachments are built to endure the challenging landscapes of Australia.

Not only do we prioritize durability and performance, but we also offer cost-effective solutions that can save you thousands in upfront costs. Join the movement and say NO to unjustified markups by choosing Aussie Buckets for your attachment needs. Experience the difference in quality, reliability, and affordability with us.

Why Choose Aussie Buckets?

Aussie Buckets is a reputable provider of premium heavy-duty excavator grabs and buckets. Our extensive range of attachments are fully customizable to suit all major OEM brands, including Cat, Komatsu, JCB, and Kubota, ensuring a perfect fit for your specific equipment.

With a vast network of 102+ pickup locations across the nation, we are committed to making our products easily accessible to our valued customers. In addition, our attachments are backed by a comprehensive 12-month warranty, providing peace of mind and assurance of our commitment to quality.

At Aussie Buckets, we go beyond just selling attachments - we provide lifetime after-sales support to our customers. Our team of experts is readily available to assist with any queries, concerns, or technical assistance, ensuring a seamless experience throughout the lifetime of your attachment.

We take pride in offering affordable excavator attachments without compromising on quality or performance. We believe that hard-working Aussies deserve the best, and it's our mission to deliver exceptional products that meet their needs and exceed their expectations.

Choose Aussie Buckets for superior excavator attachments that are tailored to your requirements, backed by reliable warranty and lifetime after-sales support. Experience the difference in quality and service with our dedicated team.

CORE VALUES

We pride ourselves in delivering exceptional quality, unmatched customer service, and relentless commitment to innovation and excellence.

► 12-MONTH WARRANTY

Our 12-month warranty, provided with every MBI Scrap Shear 2, offers unparalleled peace of mind, assuring our customers of the durability, reliability, and quality of our products for an extended period of time.

► LIFETIME SUPPORT

Our lifetime after-sales support guarantees ongoing assistance and technical guidance to our customers, ensuring a seamless experience and maximizing the lifespan of our excavator attachments.

► LARGEST RANGE IN AUSTRALIA

As the leading provider in Australia, we boast the largest and most comprehensive range of excavator attachments, offering a wide selection of options to cater to various applications and equipment brands.

► 100% PURPOSE BUILT

Our attachments are exclusively designed and fabricated 100% purpose-built to meet the unique requirements of our customers, ensuring optimal performance and satisfaction with our products.



Aidan Kuzmich
MANAGING DIRECTOR

A. Kuzmich

Manufacture & Delivery.

Our extensive product range is meticulously engineered to excel in the most challenging environments, and our reputation as a trusted provider of durable and dependable materials handling equipment is widely recognized in the industry.

MANUFACTURE

In the first four weeks, you'll receive updates at the following milestones; 50% production progress and 100% production completed alongside product photos.

IMPORT

Following fabrication completion, we promptly arrange shipment from our factory to Melbourne Port. The next update will be sent following confirmation of its departure.

TRANSIT

Under normal circumstances, the voyage is anticipated to take approximately three weeks, with an additional week allocated for port clearance and arrival at our Victorian distribution warehouse.

DELIVERY

Following any balances being settled, we arrange delivery with one of our local freight companies, sending the attachment directly to your work-site or one of our 102+ pick-up locations nationwide.

OVERVIEW

We take pride in our unwavering dedication to delivering unparalleled quality, exceptional customer service, and relentless commitment to innovation and excellence.

We take pride in our performance range attachments, which are crafted using premium materials sourced from industry-leading international suppliers. Our unwavering commitment to quality is evident in our unmatched priority service, ensuring prompt and efficient customer support.



INDUSTRY-LEADING INTERNATIONAL SUPPLIERS



PREMIUM ATTACHMENT CAPABILITIES



PREMIUM ATTACHMENT MATERIALS



UNMATCHED PRIORITY SERVICE & SUPPORT

MBI Scrap Shear 2.

Available for 2 - 150T

The MBI Scrap Shear 2 is a versatile and effective metal demolition tool, ideal for dismantling metal structures and processing scrap materials. Boasting innovative features such as the jaw design, forged reversed cylinders, and a reliable auto lube system, it ensures powerful cutting performance and optimal durability. Additionally, it offers user-friendly maintenance through its double cutting guide and speed valve, which contribute to increased productivity and precise tool positioning. The MBI Scrap Shear 2 revolutionises shear design with its innovative approach and robust capabilities.

QUICK QUOTE

Features



Speed-Valve Technology

The Speed-Valve Technology incorporated in the MBI Fixed Pulveriser significantly reduces opening and closing times during demolition tasks. This innovative feature contributes to increased productivity and efficiency by minimising delays and ensuring smoother operation.



Jaw Design

The unique jaw design in the MBI Scrap Shear 2 enhances cutting performance by working in harmony. The fixed jaw effectively tilts materials to position them for optimal cutting, while the mobile jaw delivers concentrated force on a reduced surface area, ensuring precise and powerful cutting action.



Auto Lube System

Equipped with the patented Manto-Autolube system, MBI Scrap Shear 2 models above 7 tons benefit from an automatic greasing pump. This innovative feature ensures proper lubrication of essential moving parts, reducing friction and wear, and prolonging the MBI Scrap Shear 2's overall lifespan.



1 Forged Reversed Cylinders

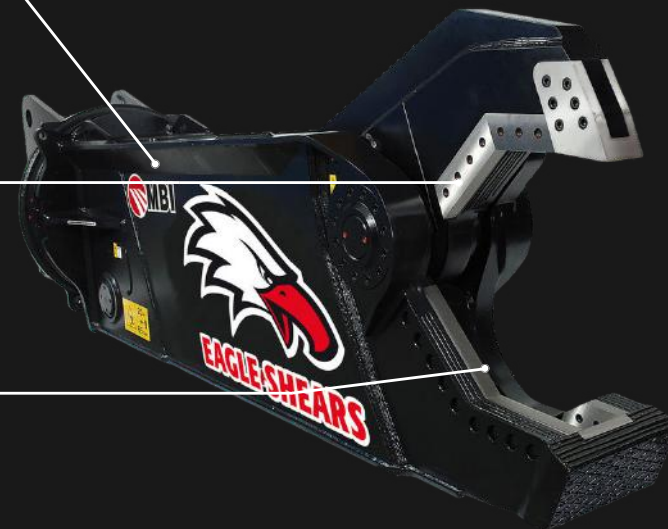
MBI Scrap Shear 2's forged reversed cylinders provide improved rod protection and contribute to the naked design, which saves weight. The cylinder rod is meticulously forged, increasing its robustness and functionality, leading to long-lasting, dependable performance.

2 Blade Design

The MBI Scrap Shear 2 boasts specially designed blades that can be turned three times before needing replacement, extending their lifespan. The blade's distinctive shape, piercing tip, and frontal blade contribute to improved cutting performance and enhanced perforation capabilities.

3 Double Cutting Guide

The MBI Scrap Shear 2's double cutting guide is essential for maintaining jaw alignment, leading to maximum cutting power. With two adjustable guides, operators can easily check and fine-tune alignment over time. The adjustment kit on the central pin further streamlines pin removal and maintenance, enhancing usability.



REDUCED OPERATIONAL TIME AND IMPROVED PRODUCTIVITY

The Rotation Group feature in the MBI Scrap Shear 2 is an essential component that contributes to the tool's precision and efficiency during operation.

The sturdy rotation mechanism allows for exact positioning of the shear, enabling operators to cut through various metal structures with greater accuracy and control.

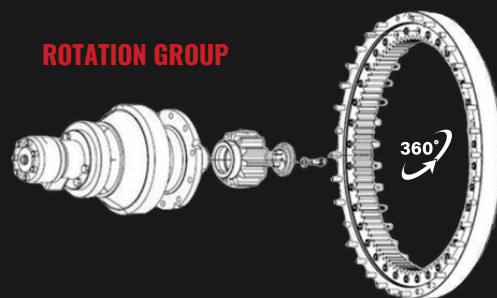
The seamless rotation of the tool also minimises the chances of misaligned cuts, improving the overall effectiveness of the demolition process and reducing material waste.

In addition to the enhanced precision, the Rotation Group feature also incorporates an anti-cavitation valve, which increases the operational safety of the MBI Scrap Shear 2.

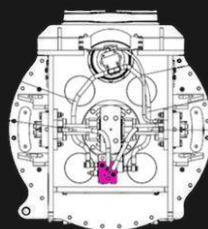
This valve prevents potential damage caused by sudden pressure changes in the hydraulic system, ensuring the long-term reliability and durability of the shear.

As a result, the Rotation Group feature not only improves the cutting performance of the MBI Scrap Shear 2 but also safeguards the tool's longevity and operational stability.

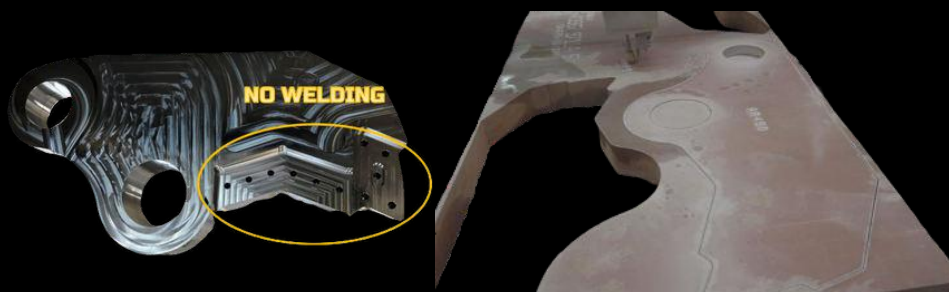
THRUST BEARING



ANTI-CAVITATION VALVE



WATER CUT JET JAWS



CONSISTENT PERFORMANCE AND EXCEPTIONAL RESULTS

The MBI Scrap Shear 2's are equipped with water jet cut jaws, a cutting-edge manufacturing technique that ensures durability and precision.

Lower and upper jaws are precisely cut from 160mm thick Hardox® steel plates using high-pressure water jets, eliminating the risk of weakening caused by high temperatures during traditional cutting processes.

After the water jet cutting process, the jaws are milled to retain the steel's mechanical characteristics, ensuring the shear's long-lasting durability and resistance to wear.

This innovative manufacturing approach results in a high-quality and reliable product, designed to withstand the rigors of demolition and recycling tasks without compromising on performance or efficiency.

In addition to the benefits of the water jet cutting technique, the precisely cut and milled jaws offer enhanced structural integrity and improved cutting capabilities.

The accurate and clean cuts result in a more efficient and effective cutting action, ensuring that the MBI Scrap Shears deliver consistent performance and exceptional results in a variety of challenging applications.

ADVANCED SPEED VALVE TECHNOLOGY

The Speed-Valve Technology integrated into the MBI Scrap Shears offers a remarkable improvement in hydraulic efficiency.

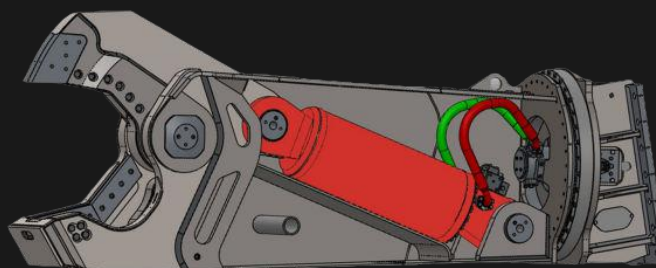
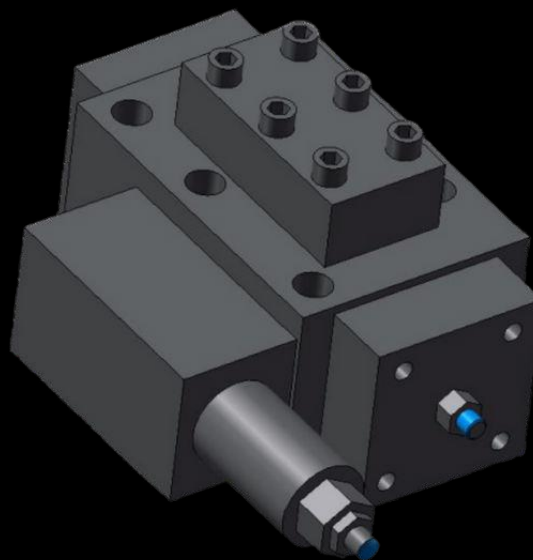
By effectively managing the flow of hydraulic fluid within the system, the Speed Valve significantly reduces the opening and closing times of the shears.

Consequently, operators can work more swiftly, achieving higher productivity and performance in demanding demolition and recycling applications.

Furthermore, the Speed-Valve Technology ensures smooth and consistent operation, enhancing the overall user experience.

By providing precise control over the hydraulic flow, the system contributes to reduced wear and tear on the equipment, prolonging the life of the shears and minimising maintenance requirements, ultimately leading to cost savings for the users.

SPEED-VALVE TECHNOLOGY



	SH320 vs SH310	SH490 vs SH410	SH800 vs SH700
FORCE	+40%	+35%	+25%

The Forged Reversed Cylinder feature of the MBI Scrap Shear 2 plays a crucial role in the tool's performance, durability, and innovative design.

By reversing the position of the cylinders, the design improves rod protection, which reduces the likelihood of damage and ensures consistent cutting power throughout the demolition process.

The forged cylinder rods also contribute to the overall robustness and functionality of the MBI Scrap Shear 2, as they are designed to withstand the immense forces required for cutting through metal structures.

Another key aspect of the Forged Reversed Cylinder feature is its contribution to the naked design of the MBI Scrap Shear 2.

By reversing the cylinders, the design effectively saves weight, making the tool more maneuverable and efficient during operation.

This reduction in weight does not compromise the shear's cutting capabilities but rather enhances its performance in various demolition scenarios.

Overall, the Forged Reversed Cylinder feature is integral to the MBI Scrap Shear 2, providing exceptional durability, power, and innovation in shear design.

DESIGNED TO WITHSTAND IMMENSE FORCES





Partnering With MBI.

At Aussie Buckets, we're committed to delivering exceptional quality and performance. We're thrilled to partner with MBI for the production of our innovative MBI Rotating Pulveriser, a noteworthy addition to our Performance Range. Leveraging MBI's expertise, this High Performance Fixed Pulveriser boasts advanced features and design, distinguishing it within the demolition industry and ensuring outstanding efficiency and productivity.

Mantovanibenne (MBI), established in 1963, has become a leading innovator in the development and production of excavator attachments for the construction, demolition, recycling, and earth-moving industries. As the head of the multinational MBI Group, the company continues to set the industry standard with their globally recognized crushers, pulverizers, and Eagle Shears.

To ensure the safety and reliability of equipment, MBI emphasises the importance of matching the right attachment with the right machine. The company offers a diverse range of attachments for various types of construction machines and configurations, and recommends consulting with their qualified technicians for optimal equipment pairing.

MBI's global dealer network provides comprehensive support to customers, from initial consultations to after-sales service. The company operates facilities in five countries - Italy, Bulgaria, France, Germany, and China - to cater to their international clientele effectively.



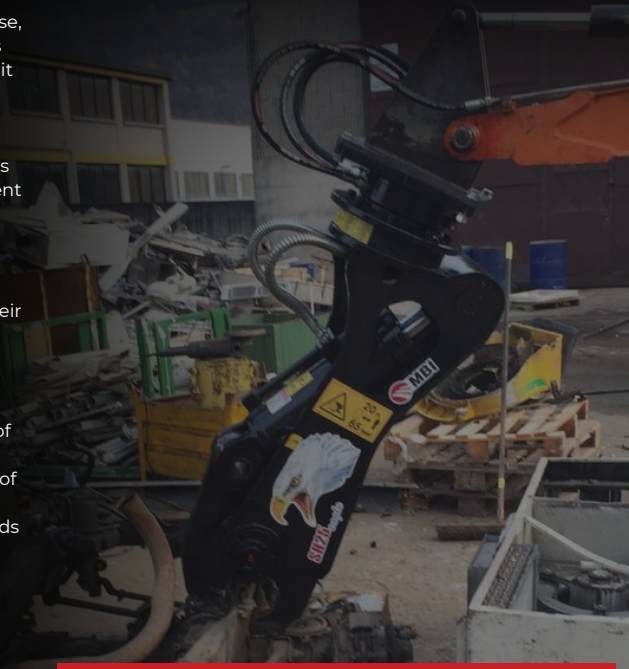
MBI Company Background

At Aussie Buckets, we're committed to delivering exceptional quality and performance. We're thrilled to partner with MBI for the production of our innovative MBI Fixed Pulveriser, a noteworthy addition to our Performance Range. Leveraging MBI's expertise, this High Performance Fixed Pulveriser boasts advanced features and design, distinguishing it within the demolition industry and ensuring outstanding efficiency and productivity.

Mantovanibenne (MBI), established in 1963, has become a leading innovator in the development and production of excavator attachments for the construction, demolition, recycling, and earth-moving industries. As the head of the multinational MBI Group, the company continues to set the industry standard with their globally recognized crushers, pulverizers, and Eagle Shears.

To ensure the safety and reliability of equipment, MBI emphasises the importance of matching the right attachment with the right machine. The company offers a diverse range of attachments for various types of construction machines and configurations, and recommends consulting with their qualified technicians for optimal equipment pairing.

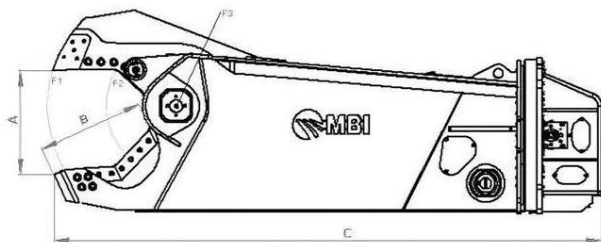
MBI's global dealer network provides comprehensive support to customers, from initial consultations to after-sales service. The company operates facilities in five countries - Italy, Bulgaria, France, Germany, and China - to cater to their international clientele effectively.



MBI's global dealer network provides comprehensive support to customers, from initial consultations to after-sales service. The company operates facilities in five countries - Italy, Bulgaria, France, Germany, and China - to cater to their international clientele effectively.

MBI's global dealer network provides comprehensive support to customers, from initial consultations to after-sales service. The company operates facilities in five countries - Italy, Bulgaria, France, Germany, and China - to cater to their international clientele effectively.

SHEAR Eagle 2 Hyd. Rotation SH2000



Dimensions

			SH2000R
Jaw opening	A	[mm]	1200
Jaw depth	B	[mm]	1200
Length	C	[mm]	6000

Cutting Table

(material used to test ST355)

			SH2000R
Rod	●	[mm]	170
Pipe	○	[mm]	914x15
IPE	⌈	[mm]	1100
HEA	⌈	[mm]	1000
HEB	⌈	[mm]	800
Plate	—	[mm]	40
L prsfile	L	[mm]	400x35
Rail vignola	⌈	[mm]	YES

SHEAR Eagle 2 Hyd. Rotation SH2000

Technical bulletin

			SH2000R
Excavator weight (instead of bucket)	[t]		170-200
Excavator weight (instead of stick)	[t]		110-150
Tool weight without coupler	[kg]		18000
Tool weight with MBI's STD coupler (instead of bucket)	[kg]		21000
Tool weight with MBI's coupler (instead of stick)	[kg]		22000
Force at upper tips F1	[t]		452
Cutting force F2 (main blade centre)	[t]		1232
Force at pin F3	[t]		4640
Hydraulic working pressure	[bar]		320-350
Oil flow	[l/min]		700-1000
Rotation type	-----		360° H
Hydraulic motor max oil pressure	[bar]		170-200
Hydraulic motor oil flow	[l/min]		140-150
Time of closing at max oil flow	[s]		4,7
Time of opening at max oil flow	[s]		9,5
N° of cycles per minute at max oil flow	[cycles/min]		4,2
N° of revs per minute at max oil flow	[revs/min]		8
Hyd.ports size cylinder	-----		2x 1"1/4 SAE 6000 p.s.i.
Hyd.ports size rotation	-----		3/4" GAS
Hyd.port size drain line	-----		1/4" GAS
Speed valve**	-----		YES
Interchangeable wear parts	-----		YES
Automatic grease system	-----		YES

SH2000 is with welded coupler.

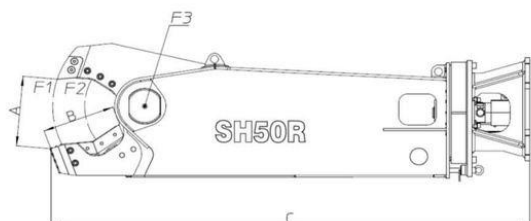
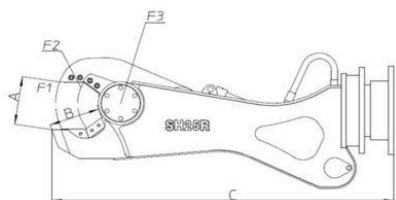
**The use of the speed valve depends on the excavator's oil flow,

For the time of closing / opening, here noted, are with speed valve and 1000 l/min,

N.B.: The noted performances have been achieved by the maximum pressure and capacity values.

N.B.: Characteristics and specifics of product could be varied without obligation of notice.

SHEARS Mini Eagle2 Hyd. Rotation SH25-SH50



Dimensions

			SH25R	SH50R
Jaw opening	A	[mm]	195	290
Jaw depth	B	[mm]	200	290
Length	C	[mm]	1350	1900

Cutting Table

(material used to test ST355)

			SH25R	SH50R
Rod	●	[mm]	30	40
Pipe	○	[mm]	114x4	127x6
IPE	I	[mm]	120	200
HEA	H	[mm]	100	120
HEB	H	[mm]	N.D.	80
Plate	—	[mm]	6	8
L profile	L	[mm]	120x8	160x10
Rail vignola	I	[mm]	NO	NO

SHEARS Mini Eagle2 Hyd. Rotation SH25-SH50

Technical bulletin

		SH25R	SH50R
Excavator weight (instead of bucket)	[t]	5-7	7-10
Excavator weight (instead of stick)	[t]	2-4	4-6
Tool weight without coupler	[kg]	340	570
Tool weight with MBI's STD coupler (instead of bucket)	[kg]	380	650
Tool weight with MBI's coupler (instead of stick)	[kg]	410	670
Force at upper tips F1	[t]	36	46
Cutting force F2 (main blade centre)	[t]	66	88
Force at pin F3	[t]	200	335
Hydraulic working pressure	[bar]	200-250	250-300
Oil flow	[l/min]	60-100	80-100
Rotation type	-----	360° H	360° H
Hydraulic motor max oil pressure	[bar]	190-200	90-100
Hydraulic motor oil flow	[l/min]	10-15	15-20
Time of closing at max oil flow	[s]	2,4	3,5
Time of opening at max oil flow	[s]	1,8	1,9
N° of cycles per minute at max oil flow	[cycles/min]	14,3	11
N° of revs per minute at max oil flow	[revs/min]	16,6	11,8
Hyd.ports size cylinder	-----	3/4" GAS	1/2" GAS
Hyd.ports size rotation	-----	1/2" GAS	1/2" GAS
Hyd.port size drain line	-----	N.N.	N.N.
Speed valve	-----	NO	NO
Interchangeable wear parts	-----	YES	YES
Automatic grease system	-----	NO	NO

SH25 and SH50 are with bolted coupler.

N.N.: Not needed. Refers to drain the Hydraulic rotation.

N.B.: The noted performances have been achieved by the maximum pressure and capacity values.

N.B.: Characteristics and specifics of product could be varied without obligation of notice.

SHEARS Eagle 2 Hyd. Rotation

SH100-SH130-SH180-SH310-SH410-SH550-SH700-SH900



Dimensions

			SH100R	SH130R	SH180R	SH310R	SH410R	SH550R	SH700R	SH900R
Jaw opening	A	[mm]	375	375	445	565	670	760	830	940
Jaw depth	B	[mm]	395	395	525	630	720	780	840	950
Length	C	[mm]	2000	2100	2700	3300	3700	3950	4300	4600

Cutting Table

(material used to test ST355)

			SH100R	SH130R	SH180R	SH310R	SH410R	SH550R	SH700R	SH900R
Rod	●	[mm]	55	55	65	85	100	110	130	160
Pipe	○	[mm]	178x6	178x6	203x8	324x10	406x12	508x14	560x16	711x20
IPE	⏏	[mm]	240	240	360	500	600	700	800	900
HEA	⏏	[mm]	200	200	280	340	400	500	650	700
HEB	⏏	[mm]	120	120	200	280	300	360	450	500
Plate	—	[mm]	12	12	15	20	25	25	30	35
L profile	L	[mm]	140x12	140x12	200x15	200x20	200x25	250x25	300x30	350x30
Rail vignola	⏏	[mm]	NO	NO	NO	NO	YES	YES	YES	YES

SHEARS Eagle 2 Hyd. Rotation

SH100-SH130-SH180-SH310-SH410-SH550-SH700-SH900

Technical bulletin

		SH100R	SH130R	SH180R	SH310R	SH410R	SH550R	SH700R	SH900R
Excavator weight (instead of bucket)	[t]	11-13	13-17	18-25	30-40	45-55	55-65	75-85	90-110
Excavator weight (instead of stick)	[t]	7-10	8-12	14-18	20-28	28-39	39-45	45-60	60-80
Tool weight without coupler	[kg]	980	1100	1900	2950	4400	5500	7400	9400
Tool weight with MBI's STD coupler (instead of bucket)	[kg]	1100	1220	2100	3300	4700	5750	7700	10100
Tool weight with MBI's coupler (instead of stick)	[kg]	1200	1320	2200	3400	4900	6000	7900	10500
Force at upper tips F1	[t]	55	55	75	110	151	185	215	290
Cutting force F2 (main blade centre)	[t]	138	138	198	286	413	478	552	707
Force at pin F3	[t]	472	472	770	1033	1372	1810	2081	2796
Hydraulic working pressure	[bar]	250-300	250-300	320-350	320-350	320-350	320-350	320-350	320-350
Oil flow	[l/min]	90-110	90-110	150-200	200-250	250-300	275-375	500-600	600-700
Rotation type	-----	360° H	360° H	360° H	360° H	360° H	360° H	360° H	360° H
Hydraulic motor max oil pressure	[bar]	190-200	90-100	130-150	100-115	100-115	100-115	140-150	170-190
Hydraulic motor oil flow	[l/min]	10-15	30-40	30-40	30-40	30-40	30-40	50-60	55-65
Time of closing at max oil flow	[s]	2,4	2,4	1,9	2,5	4	4,3	2,8	3,2
Time of opening at max oil flow	[s]	3	3	2,6	4,3	5	5,3	4,8	6,3
N° of cycles per minute at max oil flow	[cycles/min]	11,2	11,2	13,5	8,8	6,7	6,2	7,9	6,3
N° of revs per minute at max oil flow	[revs/min]	16,6	12	11,2	6,7	7,4	5,7	9,7	8,5
Hyd.ports size cylinder	-----	3/4" GAS 6000 p.s.i.	3/4" SAE 6000 p.s.i.	1" SAE 6000 p.s.i.	1" SAE 6000 p.s.i.	1"1/4 SAE 6000 p.s.i.	1"1/4 SAE 6000 p.s.i.	1"1/2 SAE 6000 p.s.i.	1"1/2 SAE 6000 p.s.i.
Hyd.ports size rotation	-----	1/2" GAS	1/2" GAS	1/2" GAS	1/2" GAS	1/2" GAS	1/2" GAS	1/2" GAS	1/2" GAS
Hyd.port size drain line	-----	N.N.	N.N.	N.N.	1/4" GAS	1/4" GAS	1/4" GAS	1/4" GAS	1/4" GAS
Speed valve	-----	YES	YES	YES	YES	YES	YES	YES	YES
Interchangeable wear parts	-----	YES	YES	YES	YES	YES	YES	YES	YES
Automatic grease system	-----	NO	NO	NO	NO	NO	NO	YES	YES

All models are with welded coupler. Only SH100 and SH130 are with bolted coupler.

Bolted pattern plate is available only on demand for following models : SH180-SH310-SH410-SH550,

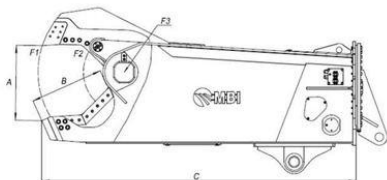
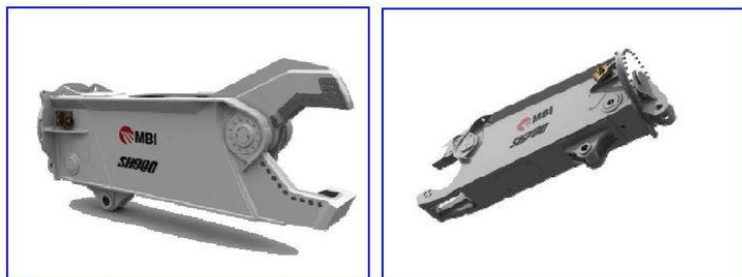
N.N.: Not needed. Refers to drain the Hydraulic rotation.

N.B.: The noted performances have been achieved by the maximum pressure and capacity values.

N.B.: Characteristics and specifics of product could be varied without obligation of notice.

SHEARS Eagle 2 without rotation

SH310-SH410-SH550-SH700-SH900-SH1500-SH2000



Dimensions

		SH310	SH410	SH550	SH700	SH900	SH1500	SH2000
Jaw opening	A [mm]	565	670	760	830	940	1100	1200
Jaw depth	B [mm]	630	720	780	840	950	1100	1200
Length	C [mm]	2850	3200	3500	3730	4070	4400	5400

Cutting Table

(material used to test ST355)

		SH310	SH410	SH550	SH700	SH900	SH1500	SH2000
Rod	● [mm]	85	100	110	130	160	165	170
Pipe	○ [mm]	324x10	406X12	508x14	560x16	711x20	813x20	914x15
IPE	I [mm]	500	600	700	800	900	1000	1100
HEA	H [mm]	340	400	500	650	700	800	1000
HEB	H [mm]	280	300	360	450	500	650	800
Plate	I [mm]	20	25	25	30	35	38	40
L profile	L [mm]	200x20	200X25	250x25	300x30	350x30	400x30	400x35
Rail vignola	I [mm]	NO	YES	YES	YES	YES	YES	YES

SHEARS Eagle 2 without rotation

SH310-SH410-SH550-SH700-SH900-SH1500-SH2000

Technical bulletin

		SH310	SH410	SH550	SH700	SH900	SH1500	SH2000
Excavator weight (instead of bucket)	[t]	25	32	40	60	80	100 *	140 *
Excavator weight (instead of stick)	[t]	15	20	25	30	40	70 *	100 *
Tool weight without coupler	[kg]	2500	3700	4750	6150	8300	11500	18000
Tool weight with MBI's STD coupler (instead of bucket)	[kg]	2800	4100	5250	6750	9100	12000	19500
Tool weight with MBI's coupler (instead of stick)	[kg]	2900	4100	5250	6750	9100	12000	19500
Force at upper tips F1	[t]	110	151	185	215	290	415	452
Cutting force F2 (main blade centre)	[t]	286	413	478	552	707	810	1232
Force at pin F3	[t]	1033	1372	1810	2081	2796	3860	4640
Hydraulic working pressure	[bar]	320-350	320-350	320-350	320-350	320-350	320-380	320-350
Oil flow	[l/min]	200-250	250-300	275-375	500-600	600-700	800-1000	700-1000
Time of closing at max oil flow	[s]	2,5	4	4,3	2,8	3,2	3,5	4,7
Time of opening at max oil flow	[s]	4,3	5	5,3	4,8	6,3	6,5	9,5
N° of cycles per minute at max oil flow	[cycles/min]	8,8	6,7	6,2	7,9	6,3	6	4,2
Hyd.ports size cylinder	----	2 x 3/4"SAE 6000 p.s.i.	2 x 3/4"SAE 6000 p.s.i.	2 x 1"SAE 6000 p.s.i.	2 x 1 1/4 SAE 6000 p.s.i.	2 x 1 1/4 SAE 6000 p.s.i.	2 x 1 1/4 SAE 6000 p.s.i.	2 x 1 1/4 SAE 6000 p.s.i.
Speed valve	----	YES	YES	YES	YES	YES	YES	YES
Interchangeable wear parts	----	YES	YES	YES	YES	YES	YES	YES
Automatic grease system	----	NO	NO	NO	YES	YES	NO	YES

*: Consult Factory

N.B.: The noted performances have been achieved by the maximum pressure and capacity values.

N.B.: Characteristics and specifics of product could be varied without obligation of notice.

Call Us (03) 9917 8598

We're easy to reach, 5 days a week.

**WATCH IT
IN ACTION**



AUSSIE BUCKETS

HEAD OFFICE

501 Errard St S,
Redan VIC 3350

Appointment Only

Monday - Friday
9:00am - 5:00pm

MARKETING OFFICE

314 Montague Road,
West End, QLD, 4101

Appointment Only

Monday - Friday
9:00am - 5:00pm

WAREHOUSE & SALES

8/6 Peterpaul Way
Truganina VIC 3029

Monday - Friday
9:00am - 5:00pm

SALES & SUPPORT

sales@aussiebuckets.com.au
support@aussiebuckets.com.au

LOGISTICS TEAM

shipping@aussiebuckets.com.au