



AUSSIE BUCKETS

PERFORMANCE
RANGE

MBI
SCRAP
SHEAR 3

CONTENTS

.03

INTRODUCTION

.04

SAY NO TO MARKUPS

.05

OUR STORY

.06

WHY CHOOSE AUSSIE BUCKETS?

.07

MANUFACTURE & DELIVERY

.08

OVERVIEW

10

MBI SCRAP SHEAR 3

.16

GALLERY

.18


PARTNERING WITH MBI

.19

MBI COMPANY BACKGROUND

.20

CONTACT US



Aussie Buckets has launched its new Performance Range of excavator attachments, featuring cutting-edge technology and innovative designs that create world-class machine efficiency and precise material handling for various applications. With a focus on durability and longevity, the performance range is built to last and perform at the highest level.

Say **No** To Markups.

As a fundamental part of society, operators in the excavation industry deserve to be looked out for.

Aussie Buckets specializes in offering an extensive selection of robust and durable excavator grabs and buckets designed for heavy-duty applications.

Our product range includes 100% customized attachments that are compatible with major OEM brands such as Cat, Komatsu, JCB, and Kubota. With over 102 pickup locations across the nation, a 12-month warranty, and lifetime after-sales support, we are committed to providing the highest level of customer satisfaction.

Aussie Buckets boasts a team of highly skilled and experienced engineers who are proficient in designing and fabricating attachments that are custom-built to meet the specific requirements of your machine.

As a leading supplier of attachments in Australia, we pride ourselves on using top-quality materials and cutting-edge technology to deliver superior products that are capable of withstanding the challenging conditions of Australian landscapes.



Our Story.

A mission to provide hard-working Australian operators with high-quality products at a fair price.

Aussie Buckets, established in 2018, is a subsidiary of the Kuzmich Watts & Tomich Group Pty Ltd Company. Our inception was driven by the need to offer Australian operators reliable and high-quality products at fair and competitive prices.

Our attachments are crafted to the highest quality standards and constructed using heavy-duty materials, thanks to our global manufacturing capabilities. With rigorous design and testing in the most demanding environments, you can trust that our attachments are built to endure the challenging landscapes of Australia.

Not only do we prioritize durability and performance, but we also offer cost-effective solutions that can save you thousands in upfront costs. Join the movement and say NO to unjustified markups by choosing Aussie Buckets for your attachment needs. Experience the difference in quality, reliability, and affordability with us.

Why Choose Aussie Buckets?

Aussie Buckets is a reputable provider of premium heavy-duty excavator grabs and buckets. Our extensive range of attachments are fully customizable to suit all major OEM brands, including Cat, Komatsu, JCB, and Kubota, ensuring a perfect fit for your specific equipment.

With a vast network of 102+ pickup locations across the nation, we are committed to making our products easily accessible to our valued customers. In addition, our attachments are backed by a comprehensive 12-month warranty, providing peace of mind and assurance of our commitment to quality.

At Aussie Buckets, we go beyond just selling attachments - we provide lifetime after-sales support to our customers. Our team of experts is readily available to assist with any queries, concerns, or technical assistance, ensuring a seamless experience throughout the lifetime of your attachment.

We take pride in offering affordable excavator attachments without compromising on quality or performance. We believe that hard-working Aussies deserve the best, and it's our mission to deliver exceptional products that meet their needs and exceed their expectations.

Choose Aussie Buckets for superior excavator attachments that are tailored to your requirements, backed by reliable warranty and lifetime after-sales support. Experience the difference in quality and service with our dedicated team.

CORE VALUES

We pride ourselves in delivering exceptional quality, unmatched customer service, and relentless commitment to innovation and excellence.

► 12-MONTH WARRANTY

Our 12-month warranty, provided with every MBI Scrap Shear 3, offers unparalleled peace of mind, assuring our customers of the durability, reliability, and quality of our products for an extended period of time.

► LIFETIME SUPPORT

Our lifetime after-sales support guarantees ongoing assistance and technical guidance to our customers, ensuring a seamless experience and maximizing the lifespan of our excavator attachments.

► LARGEST RANGE IN AUSTRALIA

As the leading provider in Australia, we boast the largest and most comprehensive range of excavator attachments, offering a wide selection of options to cater to various applications and equipment brands.

► 100% PURPOSE BUILT

Our attachments are exclusively designed and fabricated 100% purpose-built to meet the unique requirements of our customers, ensuring optimal performance and satisfaction with our products.



Aidan Kuzmich
MANAGING DIRECTOR

A. Kuzmich

Manufacture & Delivery.

Our extensive product range is meticulously engineered to excel in the most challenging environments, and our reputation as a trusted provider of durable and dependable materials handling equipment is widely recognized in the industry.

MANUFACTURE

In the first four weeks, you'll receive updates at the following milestones; 50% production progress and 100% production completed alongside product photos.

IMPORT

Following fabrication completion, we promptly arrange shipment from our factory to Melbourne Port. The next update will be sent following confirmation of its departure.

TRANSIT

Under normal circumstances, the voyage is anticipated to take approximately three weeks, with an additional week allocated for port clearance and arrival at our Victorian distribution warehouse.

DELIVERY

Following any balances being settled, we arrange delivery with one of our local freight companies, sending the attachment directly to your work-site or one of our 102+ pick-up locations nationwide.

OVERVIEW

We take pride in our unwavering dedication to delivering unparalleled quality, exceptional customer service, and relentless commitment to innovation and excellence.

We take pride in our performance range attachments, which are crafted using premium materials sourced from industry-leading international suppliers. Our unwavering commitment to quality is evident in our unmatched priority service, ensuring prompt and efficient customer support.



INDUSTRY-LEADING INTERNATIONAL SUPPLIERS



PREMIUM ATTACHMENT CAPABILITIES



PREMIUM ATTACHMENT MATERIALS



UNMATCHED PRIORITY SERVICE & SUPPORT

MBI Scrap Shear 3.

Available for 17 - 160T

The MBI Scrap Shear 3's are highly efficient and robust demolition tools, designed for cutting through iron and steel structures, large vehicles, tanks, and cisterns. Featuring a new compact frame for improved stability, the shears deliver up to 30% more cutting force with redesigned jaws for maximum performance. These shears are equipped with an oversized cylinder for faster cycles, easy maintenance, and armoured plates for increased durability. With interchangeable tips and blades, continuous hydraulic rotation, and quick routine maintenance, the MBI Scrap Shears offer superior productivity and versatility in both fixed and rotating versions.

QUICK QUOTE

Features



Speed-Valve Technology

The Speed-Valve Technology incorporated in the MBI Fixed Pulveriser significantly reduces opening and closing times during demolition tasks. This innovative feature contributes to increased productivity and efficiency by minimising delays and ensuring smoother operation.



Armoured Plates

Strategically placed interchangeable Hardox® 500 steel plates armour the most heavily used parts of the shear, providing added protection and reducing the need for frequent maintenance. These armoured plates ensure that the shear maintains a high level of wear resistance, and can be easily replaced once worn to prolong the equipment's lifespan.



Easy Maintenance

The MBI Scrap Shear 3 is designed for durability and easy maintenance without the need for complex interventions. The heavy-duty pivot components contribute to the shear's longevity, and the central pin can be easily removed on the job site for quick and hassle-free maintenance.



1 Oversized Cylinder

The oversized cylinder features an inverted design that protects the rod inside, while the enlarged bore generates more power by accelerating the opening and closing cycles. The completely forged rod ensures superior resistance compared to conventional cylinders, and the premium quality seals can last up to 3000 hours, reducing maintenance requirements.

2 Up-to 30% More Cutting Force

The MBI Scrap Shear 3 boasts an increased cutting force on all models, thanks to the new jaw design which also allows for a 9% larger opening. This enhanced capability enables operators to work more efficiently when scrapping materials, ensuring optimal results during the demolition process.

3 Water Cut Jet Jaws

Lower and upper jaws are precisely cut from 160mm thick Hardox® steel plates using high-pressure water jets, followed by a milling process to retain the steel's mechanical characteristics. This technique prevents potential weakening due to high temperatures during the cutting and machining phases, ensuring the shear's long-lasting durability.



REDUCED OPERATIONAL TIME AND IMPROVED PRODUCTIVITY

The MBI Scrap Shear 3's are designed with an innovative jaw geometry, resulting in up to 30% more cutting force across all models.

This advanced design allows operators to cut through iron and steel structures, large vehicles, tanks, and cisterns more efficiently, ensuring optimal results during the demolition process.

The increased cutting force translates into reduced operational time and improved overall productivity.

Moreover, the enhanced cutting force is accompanied by a 9% larger jaw opening, providing operators with the ability to handle larger materials and perform complex tasks with ease.

This feature not only increases the versatility of the shears but also contributes to their adaptability in various working environments, making them a valuable asset for any demolition or recycling project.

Lastly, the increased cutting force and larger jaw opening allow the MBI Scrap Shears to tackle a wider range of applications, ensuring that the shears can keep up with the evolving demands of the industry.

	SH250 vs SH180	SH320 vs SH310	SH490 vs SH410	SH800 vs SH700
CUTTING FORCE	+68%	+30%	+25%	+18%



WATER CUT JET JAWS



CONSISTENT PERFORMANCE AND EXCEPTIONAL RESULTS

The MBI Scrap Shear 3's are equipped with water jet cut jaws, a cutting-edge manufacturing technique that ensures durability and precision.

Lower and upper jaws are precisely cut from 160mm thick Hardox® steel plates using high-pressure water jets, eliminating the risk of weakening caused by high temperatures during traditional cutting processes.

After the water jet cutting process, the jaws are milled to retain the steel's mechanical characteristics, ensuring the shear's long-lasting durability and resistance to wear.

This innovative manufacturing approach results in a high-quality and reliable product, designed to withstand the rigors of demolition and recycling tasks without compromising on performance or efficiency.

In addition to the benefits of the water jet cutting technique, the precisely cut and milled jaws offer enhanced structural integrity and improved cutting capabilities.

The accurate and clean cuts result in a more efficient and effective cutting action, ensuring that the MBI Scrap Shear 3's deliver consistent performance and exceptional results in a variety of challenging applications.

ADVANCED SPEED VALVE TECHNOLOGY

The Speed-Valve Technology integrated into the MBI Scrap Shears offers a remarkable improvement in hydraulic efficiency.

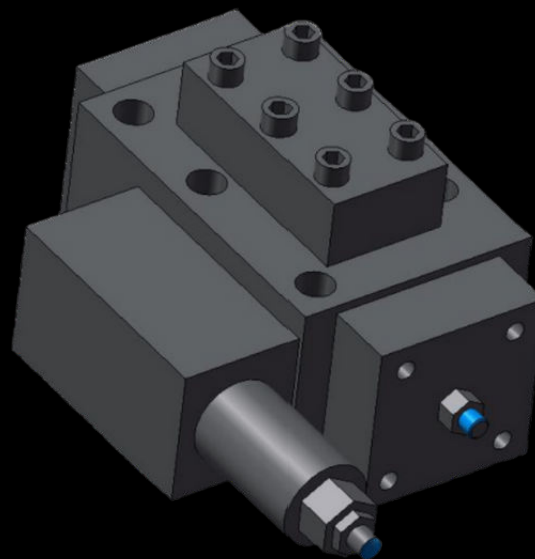
By effectively managing the flow of hydraulic fluid within the system, the Speed Valve significantly reduces the opening and closing times of the shears.

Consequently, operators can work more swiftly, achieving higher productivity and performance in demanding demolition and recycling applications.

Furthermore, the Speed-Valve Technology ensures smooth and consistent operation, enhancing the overall user experience.

By providing precise control over the hydraulic flow, the system contributes to reduced wear and tear on the equipment, prolonging the life of the shears and minimising maintenance requirements, ultimately leading to cost savings for the users.

SPEED-VALVE TECHNOLOGY



High-wear parts are fortified with interchangeable Hardox® 500 steel plates installed on the mouth profiles. This strategic reinforcement significantly reduces the need for future maintenance interventions, which could potentially harm the steel structure. The Hardox® 500 armor enables the shear to carry out any cutting process with minimal impact on the main steel structure of the lower jaw. Moreover, when the armored parts become worn, they can be easily replaced, extending the overall lifespan of the shear.

These enhancements are highly beneficial for shear operators in various ways. Primarily, the use of Hardox® 500 steel plates on high-wear parts drastically increases the durability and resilience of the shear. By mitigating wear and tear on the main steel structure, these plates allow the shear to maintain peak performance even under the most demanding cutting tasks. This means operators can rely on consistent, high-quality performance from the shear over an extended period.

The ability to replace worn armored parts further contributes to the shear's longevity, providing a cost-effective solution to maintenance. By replacing only the worn sections, operators avoid the need for more extensive, costly repairs or even full shear replacement, leading to substantial cost savings. This feature not only extends the service life of the shear but also minimizes downtime associated with maintenance, thereby maximizing operational efficiency.



MITIGATES WEAR AND TEAR



Partnering With MBI.



At Aussie Buckets, we're committed to delivering exceptional quality and performance. We're thrilled to partner with MBI for the production of our innovative MBI Rotating Pulveriser, a noteworthy addition to our Performance Range. Leveraging MBI's expertise, this High Performance Fixed Pulveriser boasts advanced features and design, distinguishing it within the demolition industry and ensuring outstanding efficiency and productivity.

Mantovanibenne (MBI), established in 1963, has become a leading innovator in the development and production of excavator attachments for the construction, demolition, recycling, and earth-moving industries. As the head of the multinational MBI Group, the company continues to set the industry standard with their globally recognized crushers, pulverizers, and Eagle Shears.

To ensure the safety and reliability of equipment, MBI emphasises the importance of matching the right attachment with the right machine. The company offers a diverse range of attachments for various types of construction machines and configurations, and recommends consulting with their qualified technicians for optimal equipment pairing.

MBI's global dealer network provides comprehensive support to customers, from initial consultations to after-sales service. The company operates facilities in five countries - Italy, Bulgaria, France, Germany, and China - to cater to their international clientele effectively.



MBI Company Background

At Aussie Buckets, we're committed to delivering exceptional quality and performance. We're thrilled to partner with MBI for the production of our innovative MBI Fixed Pulveriser, a noteworthy addition to our Performance Range. Leveraging MBI's expertise, this High Performance Fixed Pulveriser boasts advanced features and design, distinguishing it within the demolition industry and ensuring outstanding efficiency and productivity.

Mantovanibenne (MBI), established in 1963, has become a leading innovator in the development and production of excavator attachments for the construction, demolition, recycling, and earth-moving industries. As the head of the multinational MBI Group, the company continues to set the industry standard with their globally recognized crushers, pulverizers, and Eagle Shears.

To ensure the safety and reliability of equipment, MBI emphasises the importance of matching the right attachment with the right machine. The company offers a diverse range of attachments for various types of construction machines and configurations, and recommends consulting with their qualified technicians for optimal equipment pairing.

MBI's global dealer network provides comprehensive support to customers, from initial consultations to after-sales service. The company operates facilities in five countries - Italy, Bulgaria, France, Germany, and China - to cater to their international clientele effectively.

MBI's global dealer network provides comprehensive support to customers, from initial consultations to after-sales service. The company operates facilities in five countries - Italy, Bulgaria, France, Germany, and China - to cater to their international clientele effectively.

MBI's global dealer network provides comprehensive support to customers, from initial consultations to after-sales service. The company operates facilities in five countries - Italy, Bulgaria, France, Germany, and China - to cater to their international clientele effectively.

Call Us (03) 9917 8598

We're easy to reach, 5 days a week.



AUSSIE BUCKETS

HEAD OFFICE

501 Errard St S,
Redan VIC 3350

Appointment Only

Monday - Friday
9:00am - 5:00pm

MARKETING OFFICE

314 Montague Road,
West End, QLD, 4101

Appointment Only

Monday - Friday
9:00am - 5:00pm

WAREHOUSE & SALES

8/6 Peterpaul Way
Truganina VIC 3029

Monday - Friday
9:00am - 5:00pm

SALES & SUPPORT

sales@aussiebuckets.com.au
support@aussiebuckets.com.au

LOGISTICS TEAM

shipping@aussiebuckets.com.au