



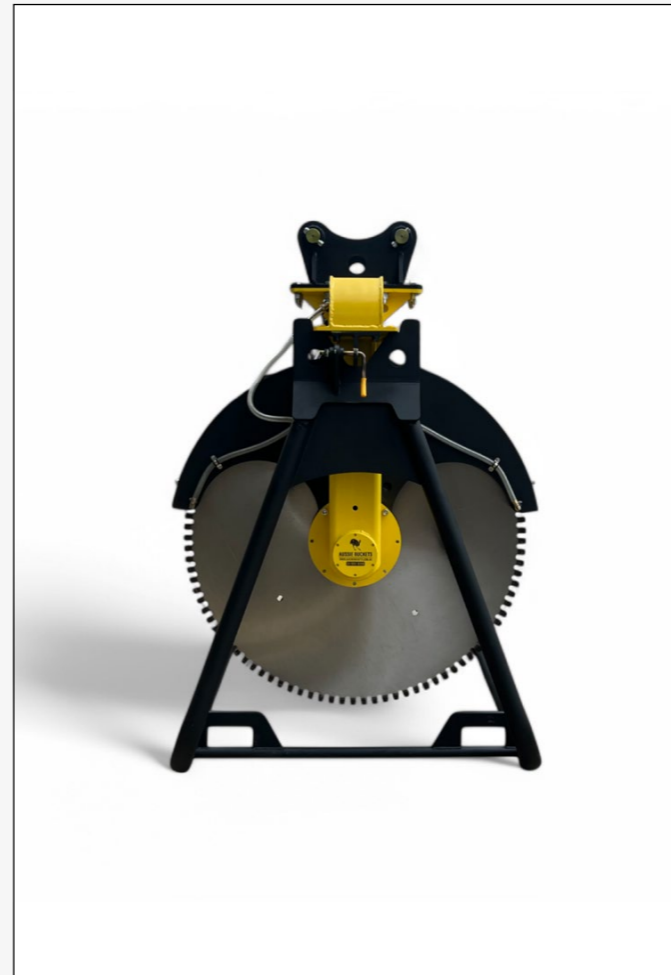
Rock Saw Series

2025

PRODUCT OVERVIEW.....	01
FEATURES.....	03
SINGLE-BLADE.....	05
DUAL-BLADE.....	06
TRIPLE-BLADE.....	07



*Pictured model: 12-25 T Dual-Blade Rock Saw



Rock Saw Series

AVAILABLE FOR 5-60 T

Our Rock Saw series, available in Single, Dual, and Triple Blade configurations, delivers precision and efficiency for demanding cutting tasks.

With a hydraulic braking system, the blade stops immediately when power is cut for safety. The adjustable two-part blade guard ensures optimal debris control. The direct drive system eliminates the need for a gearbox, reducing maintenance and improving efficiency.

A two-way hydraulic circuit allows blade rotation control from the cab, directing debris safely and enabling easy removal of a stuck blade. The sealed bearing hub prevents debris entry, ensuring durability with minimal upkeep.

Built from high-strength steel, the Rock Saw features centralised distribution blocks for efficient hose routing and motor protection. A preinstalled dust suppression system cools the blade and reduces dust for improved performance and safety.

Blade options include Tungsten and industrial-grade Diamond tips, capable of cutting reinforced concrete, rock, trees, metal, and more. Blades are replaceable for extended use.

Each Rock Saw includes a multifunctional stand for storage and maintenance, designed for easy transport via forklift. Backed by a 5-year warranty, it is built for reliability in the toughest conditions.

Reversible Capabilities

Operated on a two-way hydraulic circuit, this allows the operator to control the blade's direction from the cab, directing debris away from property or people. If the blade gets stuck while cutting, the operator can reverse the rotation to lift the blade out of the snag and continue cutting.

Direct Drive

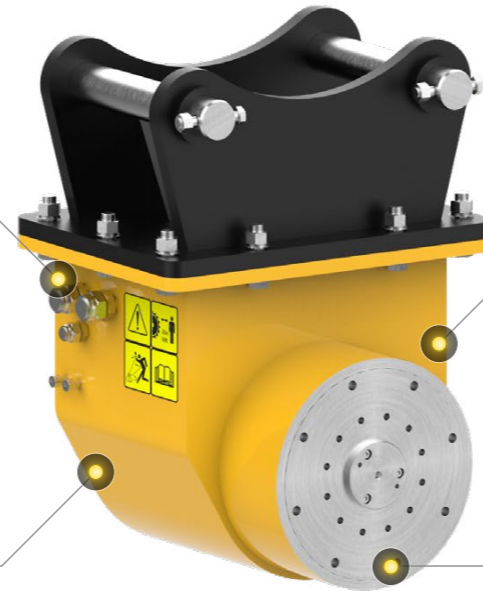
High-power, high-speed saws are driven directly by the hydraulic motor, eliminating the need for a gearbox. This increases efficiency and reliability while reducing weight and maintenance.

Adjustable Blade Guard

The rock saw features a two-part protective guard. The inner guard rotates 360 degrees around the blade, while the outer guard rotates 45 degrees. This allows for better protection from flying debris. The outer guard can be removed when cutting along a boundary wall, and the inner guard's edge is flush with the blade's outer surface.

Dust Suppression System

Included as a standard feature on all rock saw models, this system allows you to connect a water source to the inlet, enabling water to flow through the main pipe to the spray points. This keeps the saw blade and its segments cool, enhancing performance, prolonging their lifespan, and naturally reducing dust output, thereby improving health and safety while supporting a more eco-friendly operation.



Hydraulic Breaking System

The hydraulic breaking system stops the blade immediately when power is cut, improving safety. This system has no wear parts, requiring no maintenance, regular part replacements, or risk of debris from worn brakes.

Robust and Sealed Bearing Hub

Utilising double bearing protection with dust seal to protect the motor from foreign particles, these Saws are designed to have a long operating life that requires little maintenance.



Blade Options

Offering a blade of a Diamond or Tungsten tip configuration, allowing for operation of materials such as; reinforced concrete, rocks, trees, metals, sandstone, granite, marble, basalt and materials alike.

Rock Saw Stand

The rock saw comes with a multifunctional stand for storage, repositioning, adjusting cutting angles, re-tipping, or replacing blades. The stand is designed for easy transport using a forklift.

Single-Blade Rock Saw

Specifications

Tonnage	Max Power (Kw)	Rated Power (70%)	Recommended Flow Rate (LPM)	Recommended Pressure (Bar)	Machine Relief Pressure (Bar)	Output Shaft Speed (RPM)	Weight (kg)	Saw Blade Range (mm)
5 - 10	33	23.1	90 - 105	150	300	0 - 549	250	800 - 1400
8 - 16	48	33.6	135 - 158	150	300	0 - 509	350	1400 - 2000
15 - 25	59	41.3	160 - 194	150	300	0 - 480	450	1600 - 2200
20 - 45	80	56	220 - 264	150	300	0 - 425	750	2200 - 3600
25 - 60	100	70	280 - 329	150	300	0 - 325	950	2600 - 3600

Options

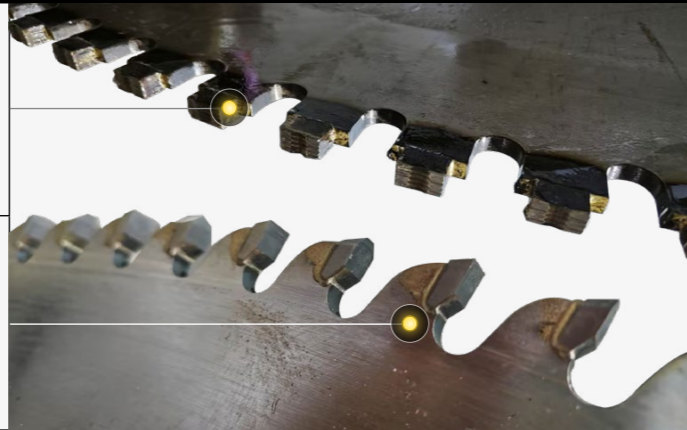
Saw Blades

Diamond-Tipped Saw Blade

Ideal for cutting through rocks, concrete, reinforced concrete, fibreglass, and tarmac, it delivers exceptional durability and cutting efficiency.

Tungsten-Carbide

Ideal for cutting timber, plastic, aluminium, copper, and other metals. Its robust design ensures long-lasting sharpness and reliability for a variety of applications.



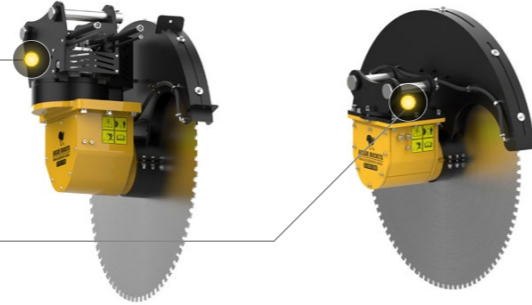
Single-Blade Bracket Options

360° Hydraulic Rotation

This model allows operators to freely control the saw cutting angle using a hydraulic motor and solenoid valve.

Manual Bolt-On Head Bracket

A more cost-effective solution that allows operators to adjust the cutting angle manually.



Offset Extension

Customisable Length

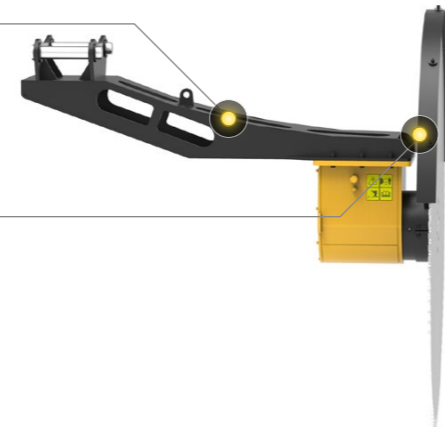
The length and structure of the offset extension can be customised to meet different site requirements.

Shield

The outer edge of the shield aligns flush with the saw blade's outer surface, allowing it to provide protection against debris.

Flush Blade

Without a protruding fixing plate, the blade can work completely flush against the wall surface allowing for maximum precision whilst cutting.



Dual-Blade Rock Saw

Specifications

Tonnage	Max Power (Kw)	Rated Power (70%)	Recommended Flow Rate (LPM)	Recommended Pressure (Bar)	Machine Relief Pressure (Bar)	Output Shaft Speed (RPM)	Weight (kg)	Saw Blade Range (mm)
5 - 10	33	23.1	90 - 105	150	300	0 - 549	250	800 - 1400
8 - 16	48	33.6	135 - 158	150	300	0 - 509	350	1400 - 2000
15 - 25	59	41.3	160 - 194	150	300	0 - 480	450	1600 - 2200

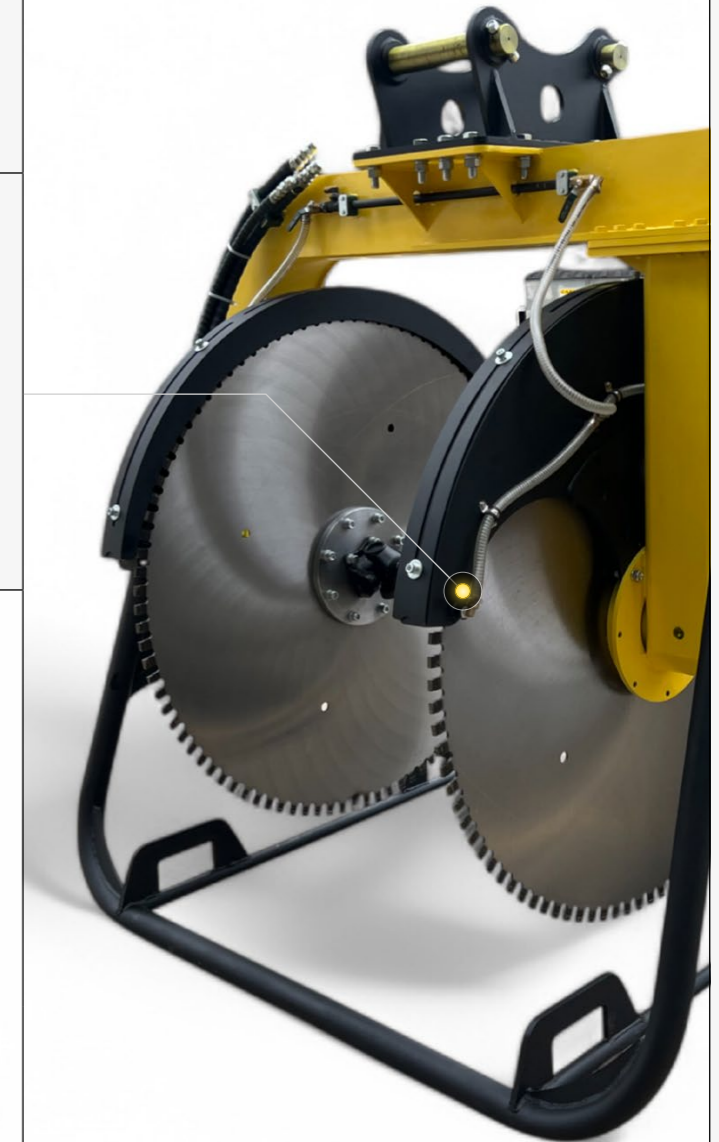
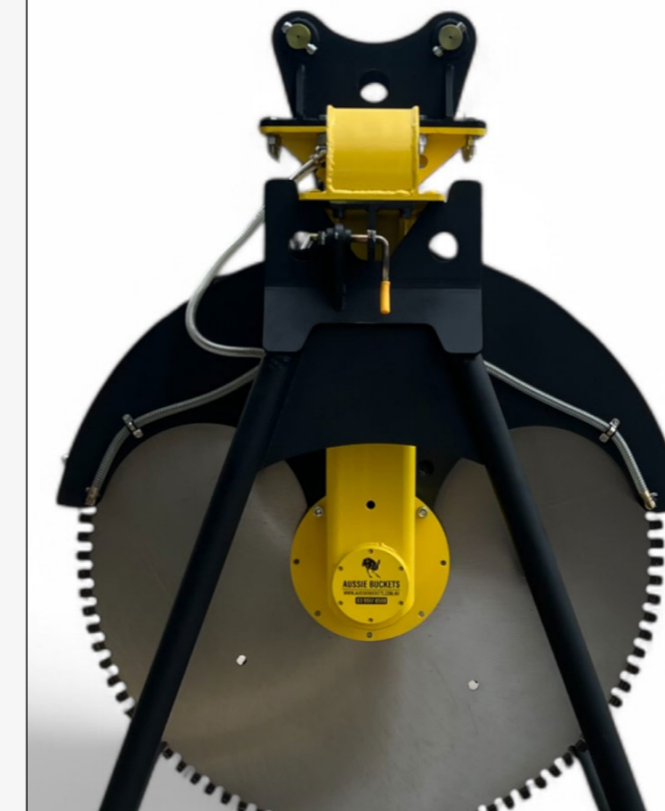
Features

Adjustable Options Available

For wider cutting requirements, we recommend our adjustable series which provides easy on-site adjustments according to your needs.

Dust Suppression System

Included as a standard feature on all rock saw models, this system allows you to connect a water source to the inlet, enabling water to flow through the main pipe to the spray points. This keeps the saw blade and its segments cool, enhancing performance, prolonging their lifespan, and naturally reducing dust output, thereby improving health and safety while supporting a more eco-friendly operation.

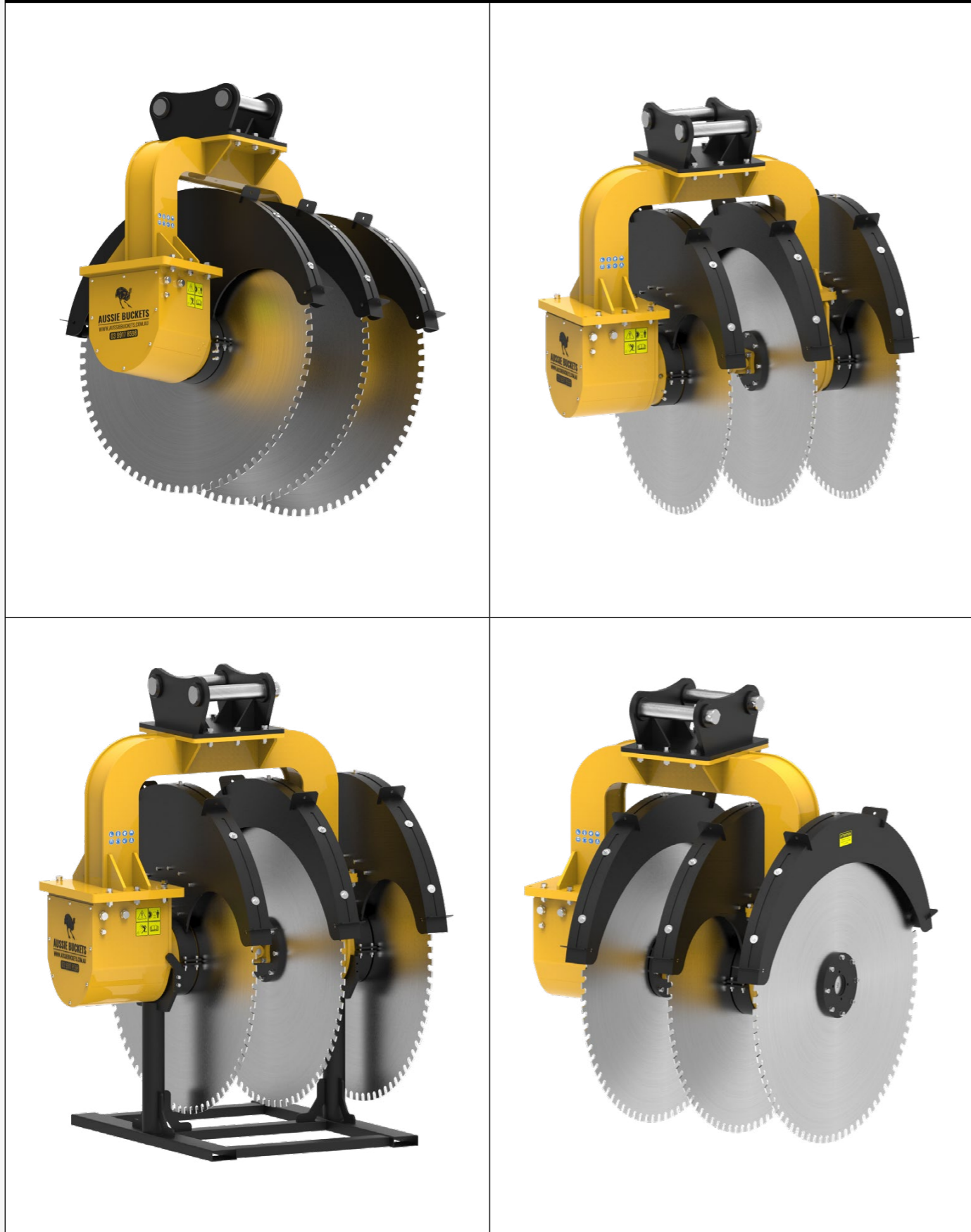


Triple-Blade Rock Saw

Specifications

Tonnage	Max Power (Kw)	Rated Power (70%)	Recommended Flow Rate (LPM)	Recommended Pressure (Bar)	Machine Relief Pressure (Bar)	Output Shaft Speed (RPM)	Weight (kg)	Saw Blade Range (mm)
5-10	33	23.1	90-105	150	300	0-549	250	800-1400

Triple-Blade Saw



*Pictured model: 20-45 T Triple-Blade Rock Saw



AUSSIE BUCKETS

SAY NO TO MARKUPS

For complete information on Aussie Buckets products and industry solutions, visit our website:

www.aussiebuckets.com.au

The photos in this catalog display various tonnages and are for illustrative purposes only. To confirm specific wear and design elements, please discuss your requirements with a member of our team. Final designs and wear elements may vary by tonnage. All product specifications were accurate at the time of publishing; however, these may differ from current specifications. For the latest details, please consult with an attachment specialist.

The words "Aussie Buckets" and the associated logo are registered trademarks within Australia.

© 2025 AUSSIE BUCKETS PTY LTD