



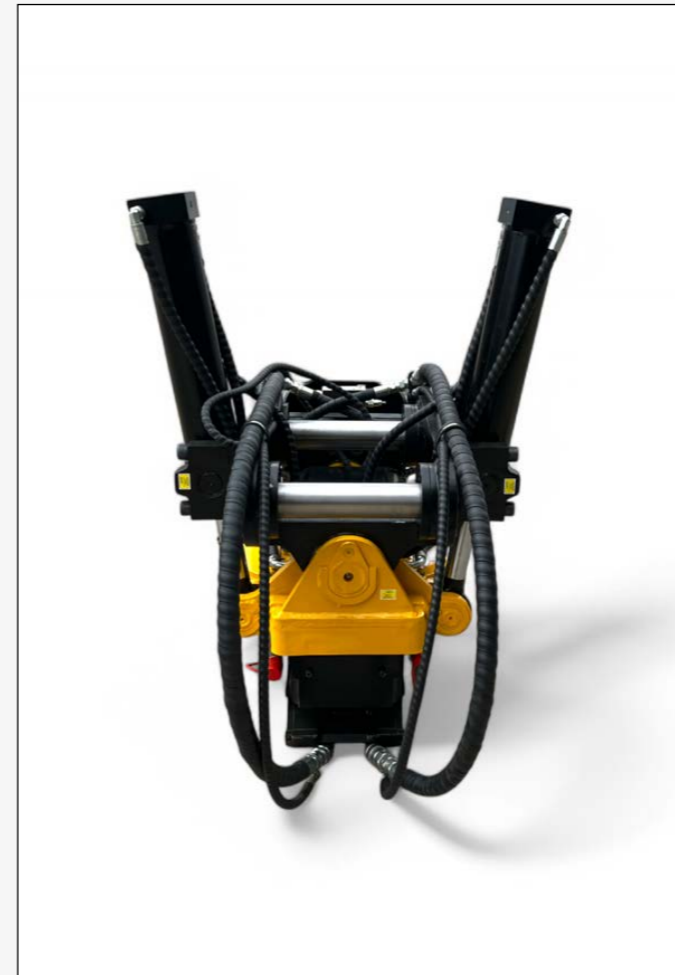
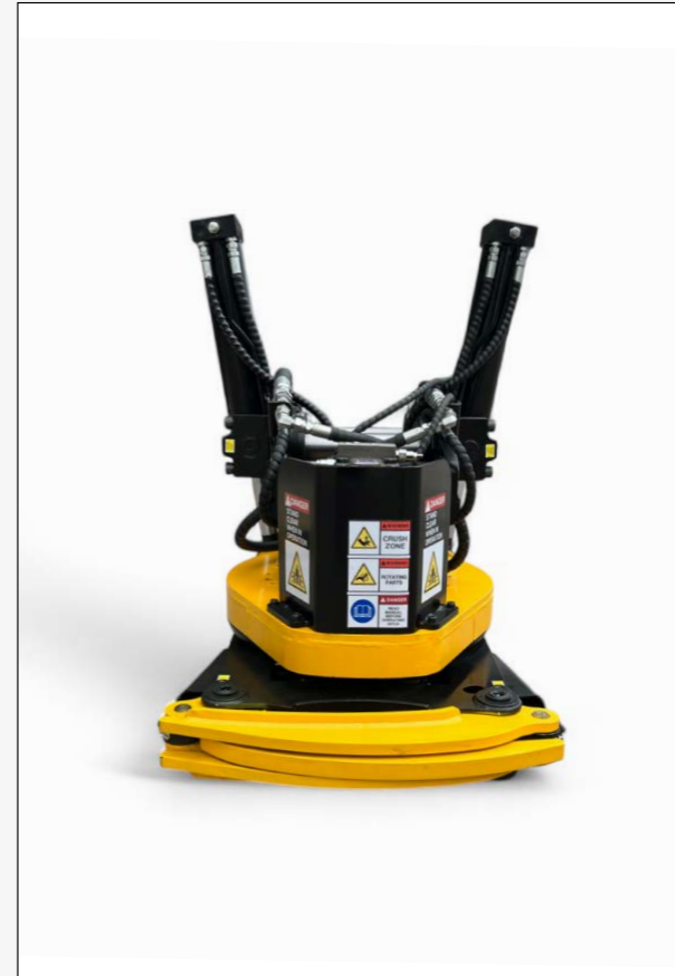
Triple-Locking Tilt Rotator

2025

PRODUCT OVERVIEW..... 01
SPECIFICATIONS & FEATURES..... 03



* Pictured model : 10-17 T Aussie Buckets Tilt Rotator



Triple-Locking Tilt Rotator

AVAILABLE FOR 2.8T - 25T

Our Tilt Rotator, also referred to as a Rotating Tilting Hitch, is engineered to expand your excavator's functionality with exceptional versatility and control. Uniquely designed to integrate seamlessly with the standard Australian hitch, this Tilt Rotator simplifies setup and reduces costs by allowing compatibility with existing attachments.

Featuring a triple-locking safety system, it provides reliable operation that meets stringent Australian standards, including AS 4772-2008, ISO 13031:2016, and WC01783, prioritising safety in all environments.

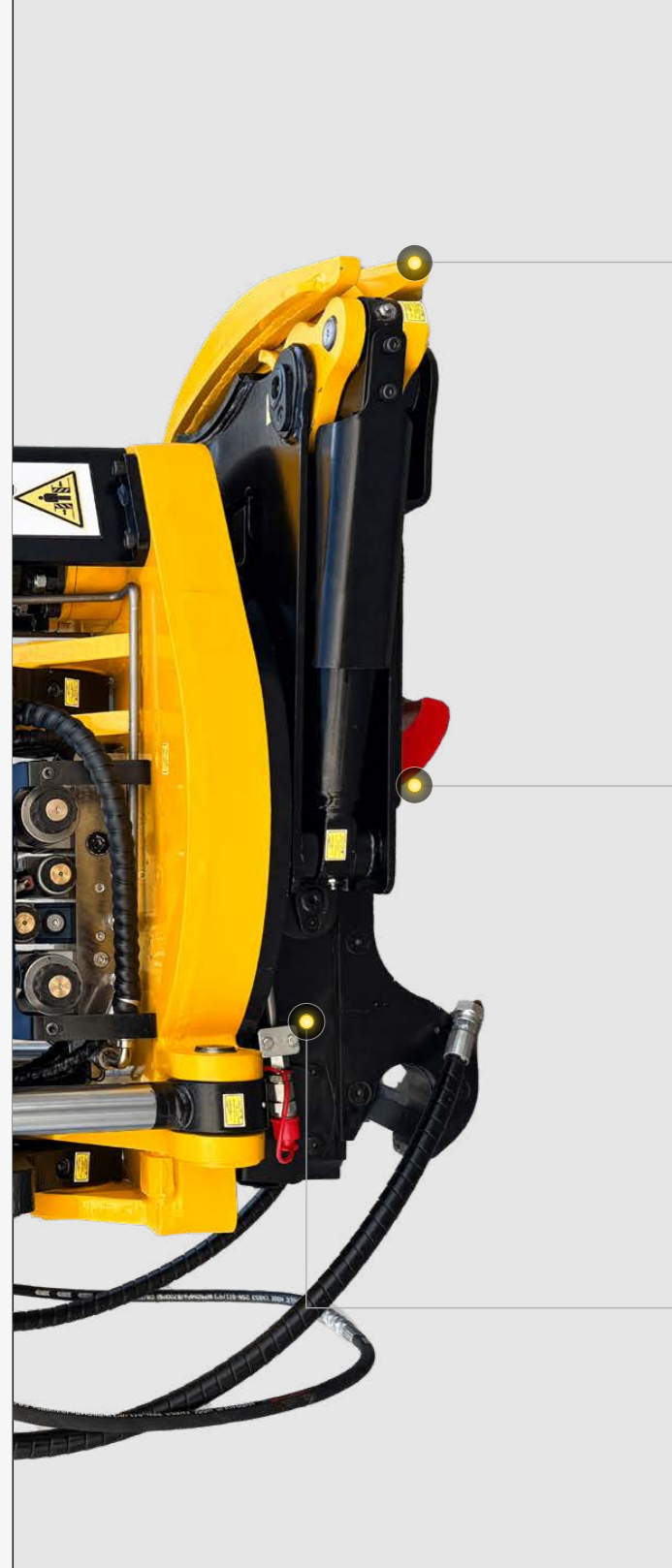
The Aussie Buckets Tilt Rotator is a cost-effective, cutting-edge solution that opens new application possibilities, enabling faster, more efficient, and precise work. With unrestricted 360-degree rotation and a 45-degree tilt in each direction, it tackles complex angles with ease, boosting productivity across diverse applications.

Its low-profile design and optimal strength-to-weight ratio, achieved through steel cast components, combine durability and efficiency, making it ideal for intensive operations.

Specifications

| Tonnage | Pin Diameter (mm) | Pressure (mpa) | Flow (lpm) | Weight with grab | Weight w/o grab (kg) | Tilting Torque (kN/m) | Rotating Torque (kN/m) |
|-----------|-------------------|----------------|------------|------------------|----------------------|-----------------------|------------------------|
| 2.8 - 3.8 | 35 - 40 | ≤ 22 | 40 - 60 | 163 | 144 | 8.3 | 2.08 |
| 4 - 5.8 | 40 - 50 | ≤ 22 | 40 - 80 | 220 | 200 | 20 | 5.5 |
| 6 - 9 | 50 - 55 | ≤ 22 | 40 - 80 | 240 | 220 | 20 | 5.5 |
| 10 - 17 | 60 - 70 | ≤ 22 | 100 - 120 | 630 | 545 | 34 | 8.7 |
| 18 - 25 | 70 - 80 | ≤ 22 | 150 - 180 | 1035 | 847 | 54 | 18.4 |

Features



Optional Pincer Grab

Add versatility with our optional integrated grab functionality. Featuring an interlocking design with link arms, to ensure secure and precise handling of materials, whilst maintaining the Tilt Rotator's profile, to ensure it doesn't interfere with other attachments or machine functions.

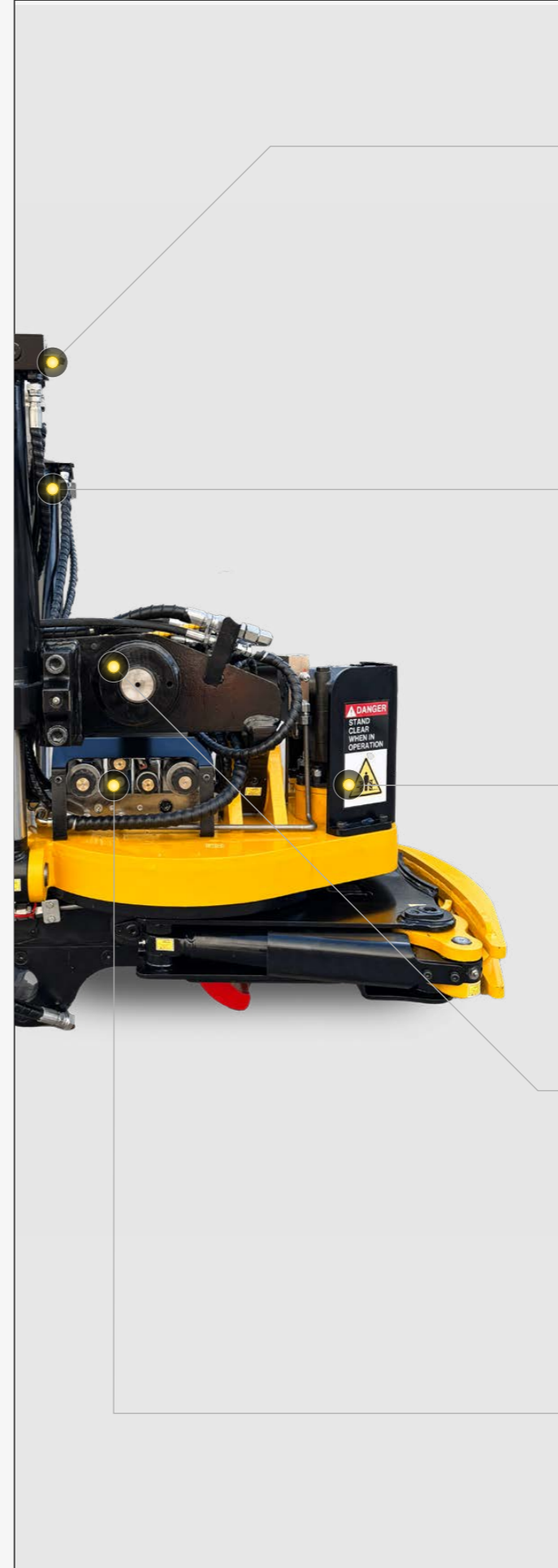
Triple Mechanical Locking Hitch

This system enhances operational security, and prevents unintentional detachment. Our innovative triple-lock design exceeds Australian regulatory and compliance standards, ensuring absolute peace of mind in every operation.

Auxiliary Line Circuit

Making it easy to add hydraulic attachments such as grapples, increasing job site efficiency and expanding its functionality for more diverse applications.

Features



Load-Holding Valves

Located on tilt cylinders for improved operator safety and peace of mind operation

90° Total Tilt

Located on tilt cylinders for improved operator safety and peace of mind operation

360° Continuous Rotating Motor

Imported German M+S motors are featured in all models providing unmatched reliability and operation.

Direct Mounted

Keeping total operating weight down, also decreasing pin to pin height increasing breakout force.

Quad Proportional Valves

High tolerance against dirt and responsive operation providing greater control and manoeuvrability.

AUSSIE BUCKETS

SAY NO TO MARKUPS

For complete information on Aussie Buckets products and industry solutions, visit our website:

www.aussiebuckets.com.au

The photos in this catalog display various tonnages and are for illustrative purposes only. To confirm specific wear and design elements, please discuss your requirements with a member of our team. Final designs and wear elements may vary by tonnage. All product specifications were accurate at the time of publishing; however, these may differ from current specifications. For the latest details, please consult with an attachment specialist.

The words "Aussie Buckets" and the associated logo are registered trademarks within Australia.

© 2025 AUSSIE BUCKETS PTY LTD