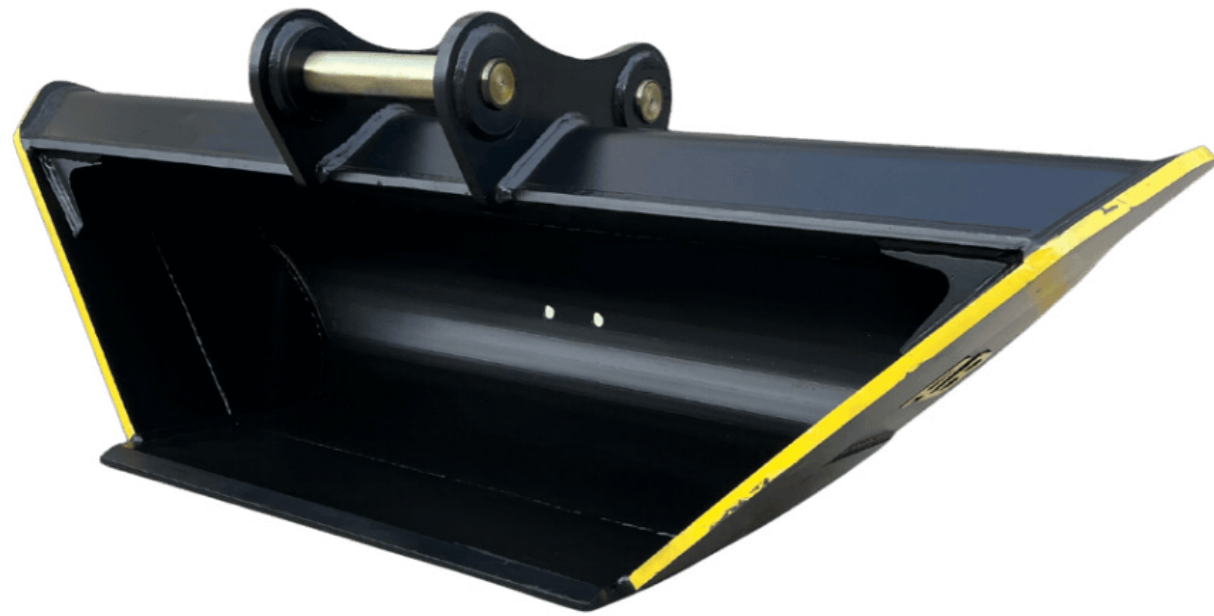




# V Bucket

# 2025

PRODUCT OVERVIEW..... 01  
SPECIFICATIONS & FEATURES..... 03



\*Pictured model: 10-14 T V Bucket, 1800mm TOP, 900mm Bottom, 45° Angle  
Standard models include teeth. Weld-on edge available on request



# V Bucket

AVAILABLE FOR 1.2T-T

Our V Bucket, also known as Winged or Drainage Bucket, is engineered for precision and durability in trenching. Fully customizable in teeth, edge, wings, taper, material, and height, it allows you to tailor every detail to your needs. Built from high-grade 400 steel with HARDOX or NM400 options, it features enhanced structural reinforcement for long-term performance.

Also known as the Winged or Drainage Bucket, is a precision-engineered tool designed to meet the unique demands of trenching and excavation.

Offering a 45 degree or 63 degree side wall option, this bucket is built around the most efficient and common site requirements, coming standard with teeth to assist with

penetration, or you can opt to have a welded on edge for a nicer finish.

The V Bucket combines robust durability with enhanced performance features. Its design includes high-quality welds and strategically placed structural reinforcements to withstand tough conditions and extend the bucket's service life.

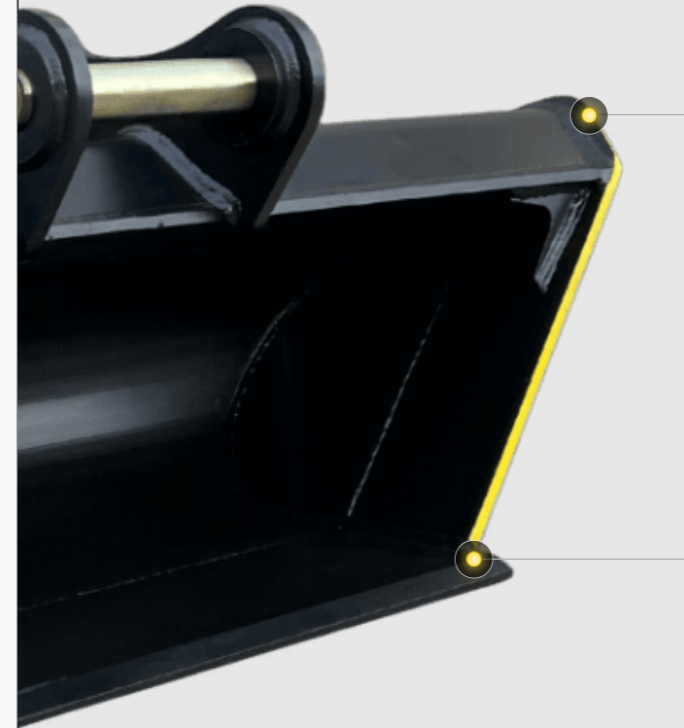
With its unmatched versatility, precision, and durability, the Heavy Duty V Bucket is the ideal solution for professionals seeking a reliable and customizable trenching tool that can handle the most demanding applications with ease.

## Specifications

Tonnage	Sidewall Degree (°)	Top Width (mm)	Bottom Width (mm)	Height (mm)	Weight (kg)
1.2 - 2.7	45°	1447	250	700	100
	63°	863	250	700	81
2.8 - 6	45°	1850	250	800	150
	63°	1605	250	800	139
7 - 11	45°	2100	300	900	280
	63°	1220	300	900	281
12 - 15	45°	2550	350	1100	520
	63°	1450	350	1100	574
16 - 20	45°	2900	350	1200	650
	63°	1700	350	1200	795
20 - 26	45°	3100	500	1300	920
	63°	1800	500	1300	1072
27 - 37	45°	3300	500	1400	1100
	63°	1900	500	1400	1278

\*Standard models include teeth. Weld-on edge available on request.

## Features



### Winglets

Enhance versatility with improved capability to push earth outwards for a cleaner and faster finish.

### Fully Customisable Spec

Customise completely for job site/compliance requirements, with full customisation over edge (teeth or bolt-on-edge) materials, height, taper and winglets for single pass trenching that diminishes unnecessary cost, headaches and completion timelines.



### Reinforced Structure

Fully integrated head bracket and strategic weld reinforcements throughout the design to improve structural integrity, prevent misshaping and increase attachment longevity.

### Five Axis Robot Welding

Higher-quality welds with minimal defects, followed by ultrasonic testing to ensure no microscopic discontinuities.

## **AUSSIE BUCKETS**

**SAY NO TO MARKUPS**

For complete information on Aussie Buckets products and industry solutions, visit our website:

[www.aussiebuckets.com.au](http://www.aussiebuckets.com.au)

The photos in this catalog display various tonnages and are for illustrative purposes only. To confirm specific wear and design elements, please discuss your requirements with a member of our team. Final designs and wear elements may vary by tonnage. All product specifications were accurate at the time of publishing; however, these may differ from current specifications. For the latest details, please consult with an attachment specialist.

The words "Aussie Buckets" and the associated logo are registered trademarks within Australia.

© 2025 AUSSIE BUCKETS PTY LTD